

**PARTS CATALOG** R410A

**Outdoor unit**  
[Model Name]  
PUHZ-SW160YKA

[Service Ref.]  
**PUHZ-SW160YKA.UK**  
**PUHZ-SW160YKAR1.UK**

PUHZ-SW200YKA

**PUHZ-SW200YKA.UK**  
**PUHZ-SW200YKAR1.UK**

**Salt proof model**  
PUHZ-SW160YKA-BS

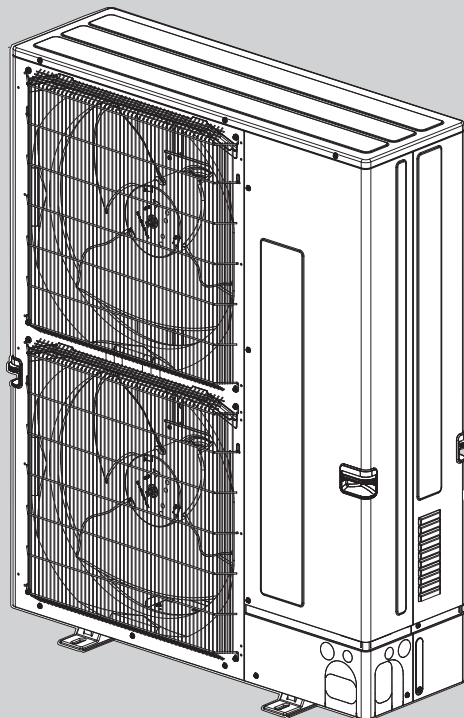
**PUHZ-SW160YKA-BS.UK**  
**PUHZ-SW160YKAR1-BS.UK**

PUHZ-SW200YKA-BS

**PUHZ-SW200YKA-BS.UK**  
**PUHZ-SW200YKAR1-BS.UK**

Revision:

- Some descriptions have been modified in REVISED EDITION-B.
- Please void OCB583 REVISED EDITION-A.



**CONTENTS**

1. SERVICE PARTS LIST ..... 2

**SERVICE MANUAL (OCH583)**

**FUNCTIONAL AND ELECTRICAL PARTS**

**PUHZ-SW160YKA.UK**

**PUHZ-SW160YKA-BS.UK**

**PUHZ-SW160YKAR1.UK**

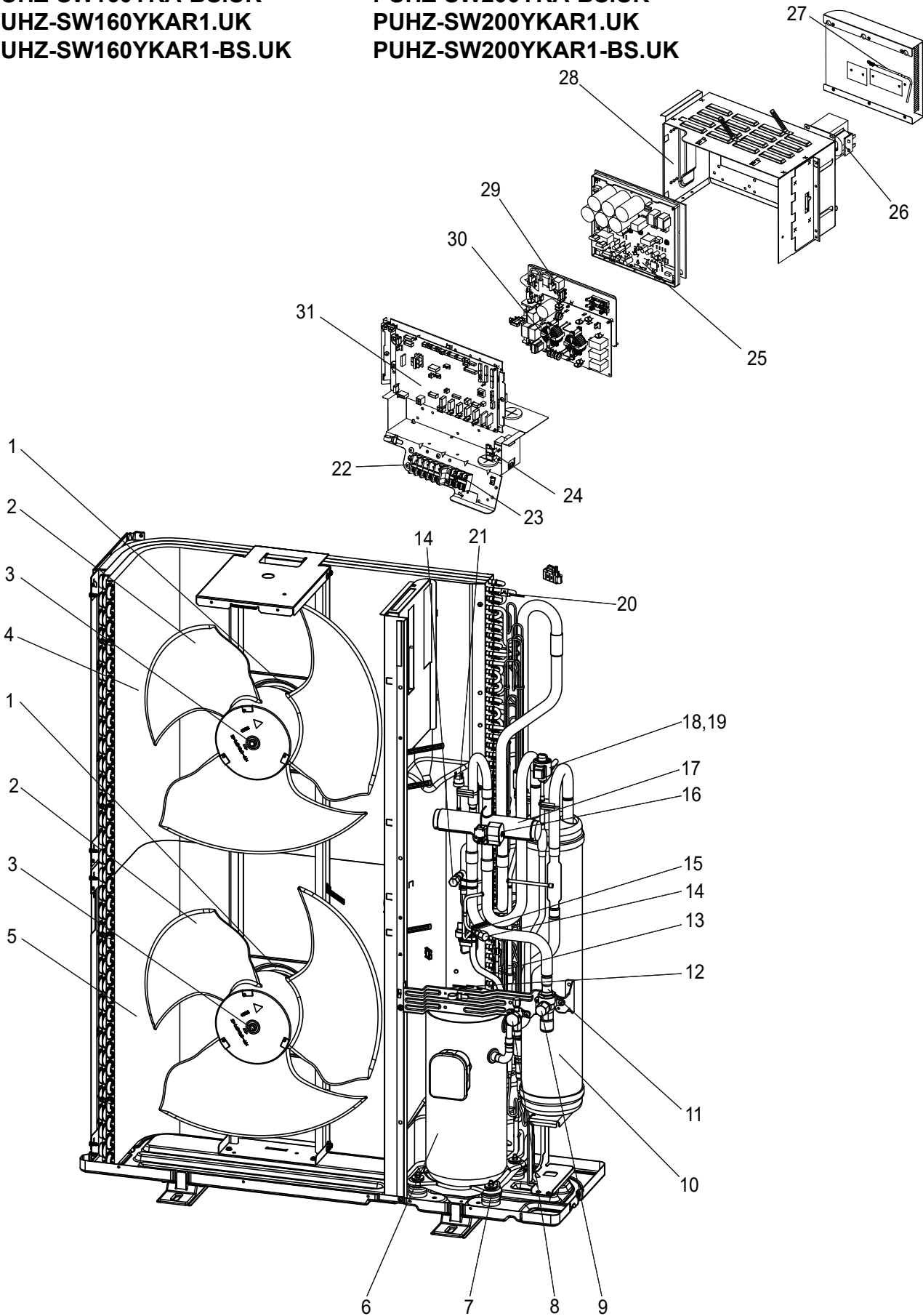
**PUHZ-SW160YKAR1-BS.UK**

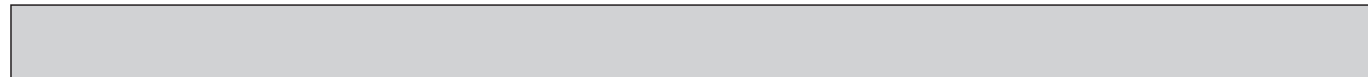
**PUHZ-SW200YKA.UK**

**PUHZ-SW200YKA-BS.UK**

**PUHZ-SW200YKAR1.UK**

**PUHZ-SW200YKAR1-BS.UK**





No.	Parts No.	Parts Name	Specification	Q'ty/unit								Remarks (Drawing No.)	Wiring Diagram Symbol
				PUHZ-SW160YKA.UK	PUHZ-SW160YKAR1.UK	PUHZ-SW160YKA-BS.UK	PUHZ-SW160YKAR1-BS.UK	PUHZ-SW200YKA.UK	PUHZ-SW200YKAR1.UK	PUHZ-SW200YKA-BS.UK	PUHZ-SW200YKAR1-BS.UK		
1	S70 E90 763	FAN MOTOR		2	2	2	2	2	2	2	2		MF1,2
2	S70 E50 115	PROPELLER FAN		2	2	2	2	2	2	2	2		
3	S70 K01 097	NUT		2	2	2	2	2	2	2	2		
4	S70 E38 408	HEAT EXCHANGER (TOP)		1	1	1	1	1	1	1	1		
5	S70 E39 408H	HEAT EXCHANGER (UNDER)		1	1	1	1	1	1	1	1		
6	S70 E70 400	COMPRESSOR	ANB52FRNMT	1	1	1	1	1	1	1	1		MC
7	S70 E02 004	RUBBER MOUNT	1 PC/ SET	4	4	4	4	4	4	4	4		
8	S70 600 418	STOP VALVE (LIQUID)	3/8'	1	1	1	1						
	S70 700 418	STOP VALVE (LIQUID)	1/2'					1	1	1	1		
9	S70 E08 411	BALL VALVE (GAS)	3/4'	1	1	1	1	1	1	1	1		
10	S70 E95 440H	ACCUMULATOR		1	1	1	1	1	1	1	1		
11	S70 42L 450	STRAINER	50#	1	1	1	1	1	1	1	1		
12	S70 E69 202	THERMISTOR	Comp. surface	1	1	1	1	1	1	1	1		TH32
13	S70 E58 202	THERMISTOR	Liquid, 1150/XAP	1	1	1	1	1	1	1	1		TH3
14	S70 E02 413	CHARGE PLUG		2	2	2	2	2	2	2	2		
15	S70 E11 208H	HIGH PRESSURE SENSOR		1	1	1	1	1	1	1	1		63HS
16	S70 E09 242	SOLENOID COIL <4-WAY VALVE>		1	1	1	1	1	1	1	1		21S4
17	S70 E06 403	4-WAY VALVE		1	1	1	1	1	1	1	1		
18	S70 E15 401	EXPANSION VALVE	UKV-32D	1	1	1	1	1	1	1	1		
19	S70 E30 402	LINEAR EXPANSION VALVE COIL	UKV-A277	1	1	1	1	1	1	1	1		
20	S70 E31 202	THERMISTOR	Ambient, 2-phase pipe	1	1	1	1	1	1	1	1		TH6,7
21	S70 E10 208	HIGH PRESSURE SWITCH	OFF 4.14MPA	1	1	1	1	1	1	1	1		63H
22	S70 E09 716	TERMINAL BED	5P(L1,L2,L3 N,E)	1	1	1	1	1	1	1	1		TB1
23	S70 E08 716	TERMINAL BED	3P(S1,S2,S3)	1	1	1	1	1	1	1	1		TB2
24	S70 K25 259	REACTOR		1	1	1	1	1	1	1	1		ACL4
25	S70 E45 313	POWER CIRCUIT BOARD		1	1	1	1	1	1	1	1		P.B.
26	S70 K35 259	REACTOR		1	1	1	1	1	1	1	1		DCL
27	S70 E55 202	THERMISTOR	Heat sink	1	1	1	1	1	1	1	1		TH8
28	S70 E75 316	COMPLETE CONTROL BOX ASSY		1		1							
	S70 E76 316	COMPLETE CONTROL BOX ASSY						1		1			
29	S70 E20 234	RESISTOR		1	1	1	1	1	1	1	1		RS
30	S70 E70 346	NOISE FILTER CIRCUIT BOARD		1	1	1	1	1	1	1	1		N.F.
31	S70 E95 315	CONTROLLER CIRCUIT BOARD		1		1		1		1			C.B.
	S70 E97 315H	CONTROLLER CIRCUIT BOARD			1		1		1		1		C.B.

**STRUCTURAL PARTS**

**PUHZ-SW160YKA.UK**

**PUHZ-SW160YKA-BS.UK**

**PUHZ-SW160YKAR1.UK**

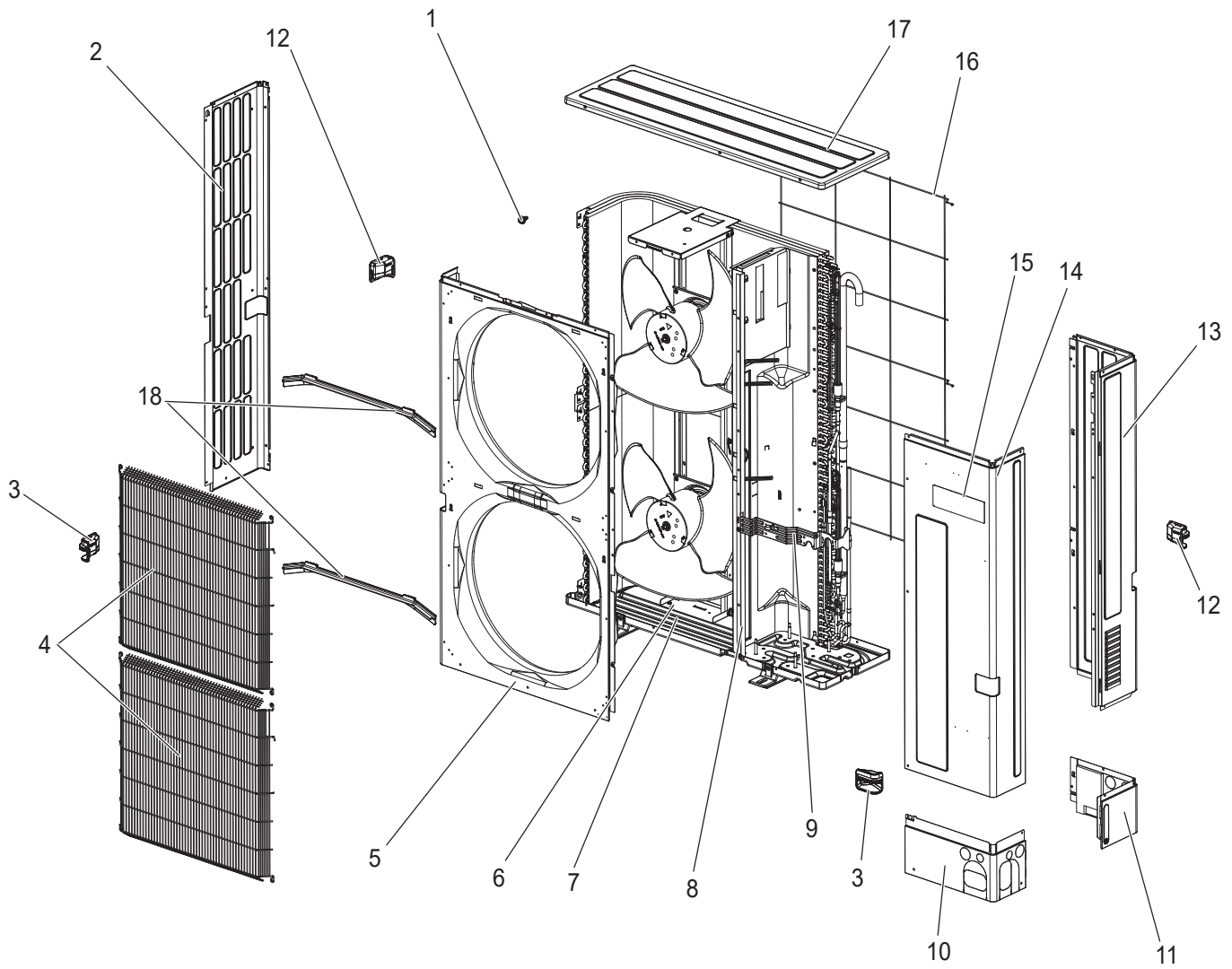
**PUHZ-SW160YKAR1-BS.UK**

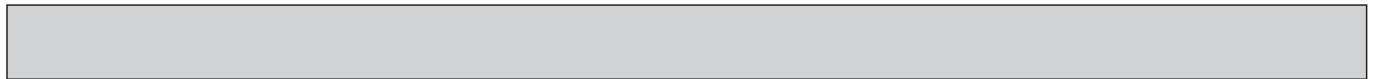
**PUHZ-SW200YKA.UK**

**PUHZ-SW200YKA-BS.UK**

**PUHZ-SW200YKAR1.UK**

**PUHZ-SW200YKAR1-BS.UK**





No.	Parts No.	Parts Name	Specification	Q'ty/unit								Remarks (Drawing No.)
				PUHZ-SW160YKA.UK	PUHZ-SW160YKAR1.UK	PUHZ-SW160YKA-BS.UK	PUHZ-SW160YKAR1-BS.UK	PUHZ-SW200YKA.UK	PUHZ-SW200YKAR1.UK	PUHZ-SW200YKA-BS.UK	PUHZ-SW200YKAR1-BS.UK	
1	—	F.ST SCREW	(5×12)	45	45	45	45	45	45	45	45	(DG12F536H12)
2	S70 E17 662	SIDE PANEL (L)		1	1			1	1			
	S70 E19 662	SIDE PANEL (L)				1	1			1	1	
3	S70 E20 655	HANDLE (FRONT)		2	2	2	2	2	2	2	2	
4	S70 E40 675	WIRE GRILLE		2	2	2	2	2	2	2	2	
5	S70 E61 668	FRONT PANEL		1	1			1	1			
	S70 E62 668	FRONT PANEL				1	1			1	1	
6	S70 E95 130	MOTOR SUPPORT		1	1	1	1	1	1	1	1	
7	S70 E91 686	BASE ASSY		1	1			1	1			
	S70 E95 686	BASE ASSY				1	1			1	1	
8	—	SEPARATOR		1	1			1	1			(BK00N021G60)
	—	SEPARATOR				1	1			1	1	(BK00N021G61)
9	—	VALVE BED ASSY		1	1	1	1	1	1	1	1	(BK00R803G03)
10	S70 E55 658	COVER PANEL (FRONT)		1	1			1	1			
	S70 E57 658	COVER PANEL (FRONT)				1	1			1	1	
11	S70 E65 658	COVER PANEL (REAR)		1	1			1	1			
	S70 E67 658	COVER PANEL (REAR)				1	1			1	1	
12	S70 E30 655	HANDLE (REAR)		2	2	2	2	2	2	2	2	
13	S70 E18 662	SIDE PANEL (R)		1	1			1	1			
	S70 E96 662	SIDE PANEL (R)				1	1			1	1	
14	S70 E45 661	SERVICE PANEL		1	1			1	1			
	S70 E46 661	SERVICE PANEL				1	1			1	1	
15	S70 E80 699	LABEL (BRAND)		1	1	1	1	1	1	1	1	
16	S70 E30 698	REAR GUARD		1	1	1	1	1	1	1	1	
17	S70 E40 641	TOP PANEL		1	1			1	1			
	S70 E50 641	TOP PANEL				1	1			1	1	
18	S70 E10 631	ICE GUARD		2	2	2	2	2	2	2	2	

# MITSUBISHI ELECTRIC CORPORATION

HEAD OFFICE : TOKYO BUILDING., 2-7-3, MARUNOUCHI, CHIYODA-KU, TOKYO 100-8310, JAPAN

---