

PARTS CATALOG R410A

[Model Name]

PUHZ-SHW80VAA
 PUHZ-SHW112VAA
 PUHZ-SHW80YAA
 PUHZ-SHW112YAA
 PUHZ-SW75VAA
 PUHZ-SW100VAA
 PUHZ-SW75YAA
 PUHZ-SW100YAA
 PUHZ-SW75VAA-SC
 PUHZ-SW75YAA-SC

Salt proof model

PUHZ-SHW80VAA-BS
 PUHZ-SHW112VAA-BS
 PUHZ-SHW80YAA-BS
 PUHZ-SHW112YAA-BS
 PUHZ-SW75VAA-BS
 PUHZ-SW100VAA-BS
 PUHZ-SW75YAA-BS
 PUHZ-SW100YAA-BS

[Service Ref.]

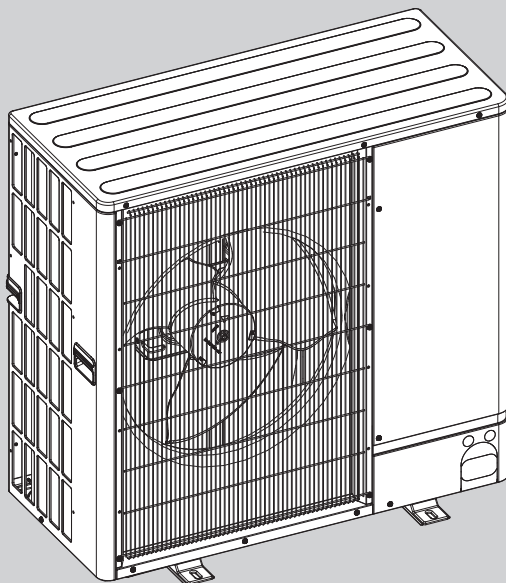
PUHZ-SHW80VAA.UK
 PUHZ-SHW112VAA.UK
 PUHZ-SHW80YAA.UK
 PUHZ-SHW112YAA.UK
 PUHZ-SW75VAA.UK
 PUHZ-SW100VAA.UK
 PUHZ-SW75YAA.UK
 PUHZ-SW100YAA.UK
 PUHZ-SW75VAA-SC.UK
 PUHZ-SW75YAA-SC.UK

PUHZ-SHW80VAA-BS.UK
 PUHZ-SHW112VAA-BS.UK
 PUHZ-SHW80YAA-BS.UK
 PUHZ-SHW112YAA-BS.UK
 PUHZ-SW75VAA-BS.UK
 PUHZ-SW100VAA-BS.UK
 PUHZ-SW75YAA-BS.UK
 PUHZ-SW100YAA-BS.UK

Revision:

- Some descriptions have been modified in REVISED EDITION-B.

- OCB651 REVISED EDITION-A is void.

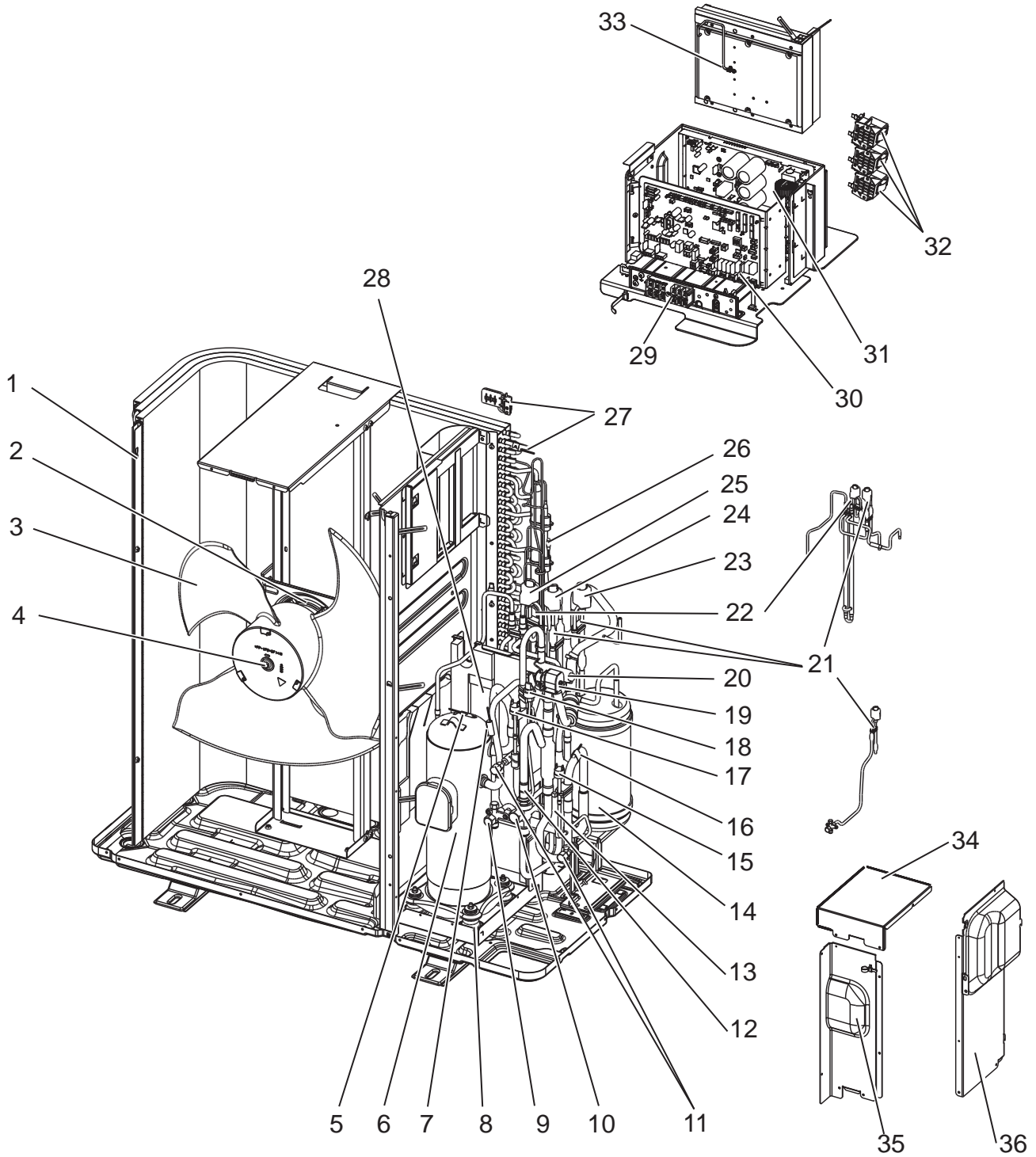


CONTENTS

1. SERVICE PARTS LIST.....2
2. OPTIONAL PARTS..... 18

SERVICE MANUAL (OCH651)

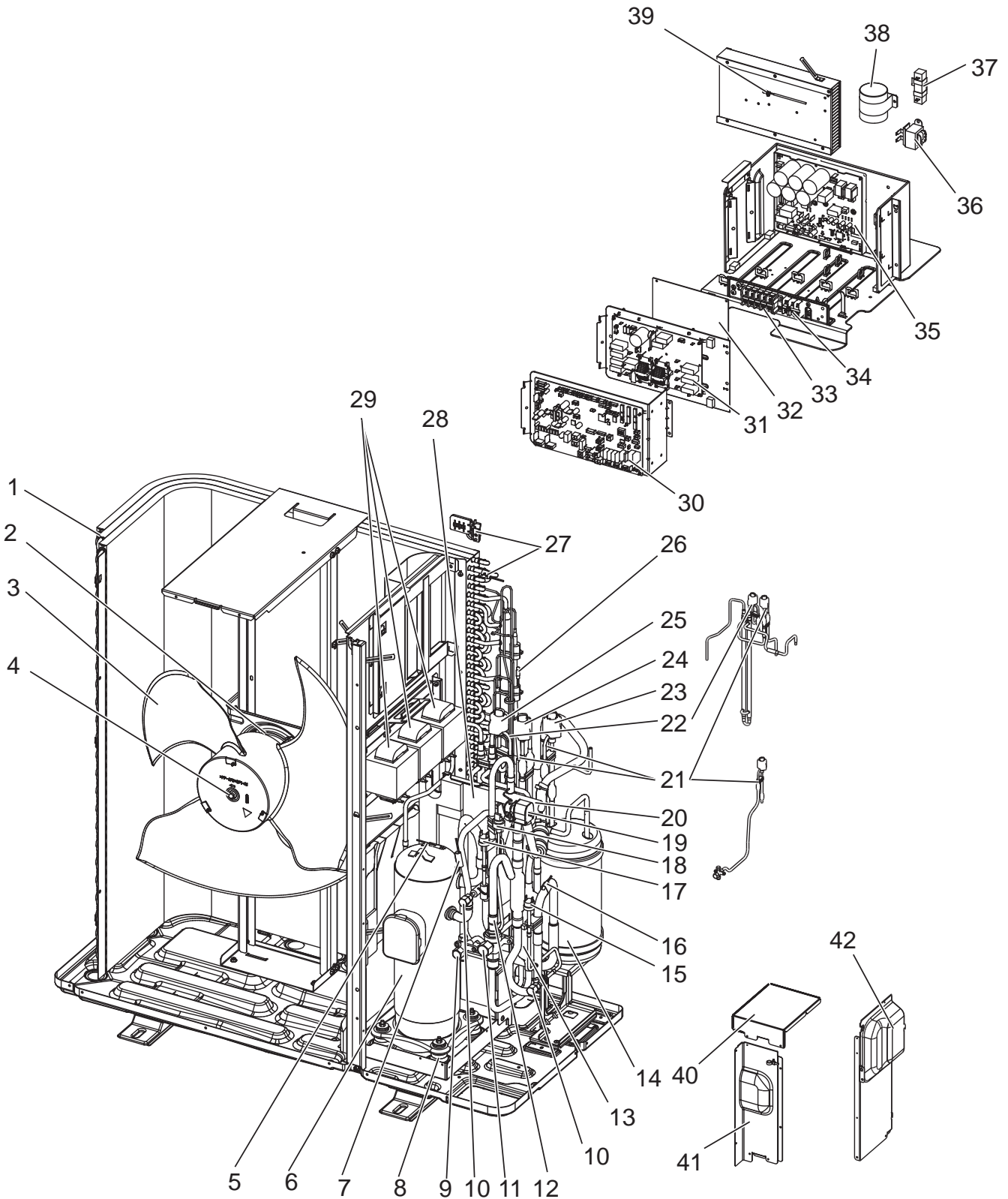
FUNCTIONAL AND ELECTRICAL PARTS
PUHZ-SHW80VAA.UK
PUHZ-SHW112VAA.UK
PUHZ-SHW80VAA-BS.UK
PUHZ-SHW112VAA-BS.UK





No.	Parts No.	Parts Name	Specification	Q'ty/unit				Remarks (Drawing No.)	Wiring Diagram Symbol
				PUHZ-SHW80VAA.UK	PUHZ-SHW112VAA.UK	PUHZ-SHW80VAA-BS.UK	PUHZ-SHW112VAA-BS.UK		
1	S70 E42 408H	HEAT EXCHANGER		1	1	1	1		
2	S70 E96 763	FAN MOTOR		1	1	1	1		MF1
3	S70 E50 115	PROPELLER FAN		1	1	1	1		
4	S70 K01 097	NUT		1	1	1	1		
5	S70 E74 202	THERMISTOR (COMP. SURFACE)		1	1	1	1		TH33
6	S70 E24 400	COMPRESSOR	DNK28FBAMT	1	1	1	1		MC
7	S70 E78 202	THERMISTOR (DISCHARGE)	D8	1	1	1	1		TH4
8	S70 E04 004	RUBBER MOUNT		4	4	4	4		
9	S70 600 418	STOP VALVE (LIQUID)	3/8'	1	1	1	1		
10	S70 E06 411	BALL VALVE (GAS)	5/8'	1	1	1	1		
11	S70 E05 413	CHARGE PLUG		2	2	2	2		
12	S70 36L 450	STRAINER	#50	1	1	1	1		
13	S70 E20 467	MUFFLER		1	1	1	1		
14	S70 E15 440H	RECEIVER		1	1	1	1		
15	S70 H20 209	LOW PRESSURE SWITCH		1	1	1	1		63L
16	S70 E79 202	THERMISTOR (SUCTION)	950XA	1	1	1	1		TH32
17	S70 E10 208H	HIGH PRESSURE SWITCH	OFF 4.14MPA	1	1	1	1		63H
18	S70 E11 208H	HIGH PRESSURE SENSOR		1	1	1	1		63HS
19	S70 E11 242	SOLENOID COIL <4WAY COIL>		1	1	1	1		21S4
20	S70 E08 403	REVERSING VALVE (4WAY VALVE)		1	1	1	1		
21	S70 E96 401	EXPANSION VALVE	UKV-25D251	2	2	2	2		
22	S70 E95 401	EXPANSION VALVE	UKV-18D124	1	1	1	1		
23	S70 E87 402	LINEAR EXPANSION VALVE COIL	UKV-A211	1	1	1	1		LEV-B
24	S70 E88 402	LINEAR EXPANSION VALVE COIL	UKV-A212	1	1	1	1		LEV-A
25	S70 E77 402	LINEAR EXPANSION VALVE COIL	UKV-A269	1	1	1	1		LEV-C
26	S70 E47 202	THERMISTOR-H (LIQUID)	1050 XAP	1	1	1	1		TH3
27	S70 E75 202	THERMISTOR-W (AMBIENT, 2-PHASE PIPE)	950/1150	1	1	1	1		TH6/7
28	S70 E05 005	COMP CASE BACK		1	1	1	1		
29	S70 E11 716	TERMINAL BLOCK	6P(L,N,E + S1,S2,S3)	1	1	1	1		TB1
30	S70 E35 315	CONTROLLER CIRCUIT BOARD		1	1	1	1		C.B.
31	S70 E51 313	POWER CIRCUIT BOARD		1	1	1	1		P.B.
32	S70 K95 259	REACTOR	18mH	3	3	3	3		DCL1,2,3
33	S70 E76 202	THERMISTOR (HEAT SINK)		1	1	1	1		TH8
34	S70 E07 008	COMP CASE TOP		1	1	1	1		
35	S70 E07 006H	COMP CASE FRONT		1	1	1	1		
36	S70 E05 007	COMP CASE SIDE		1	1	1	1		

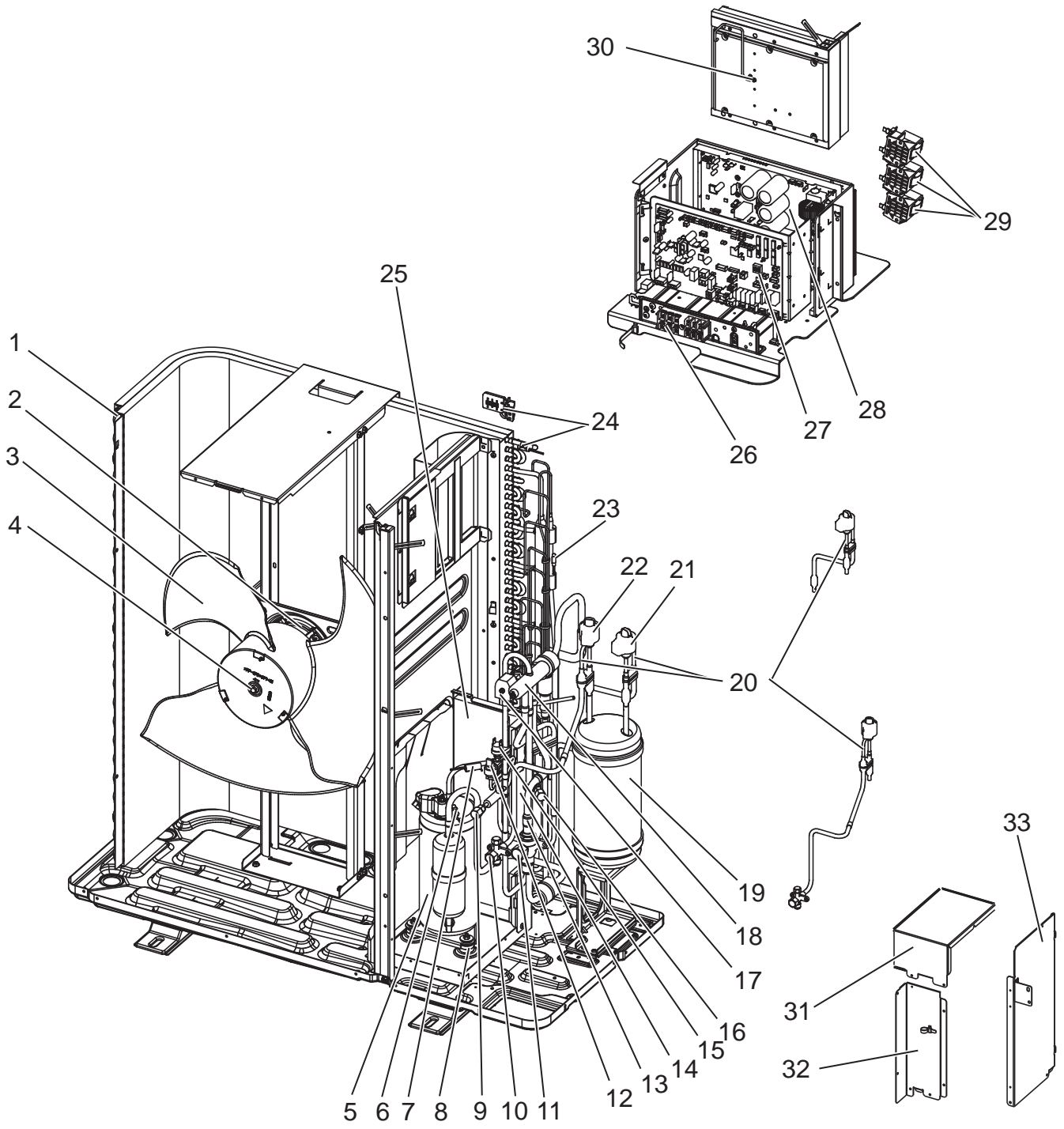
FUNCTIONAL AND ELECTRICAL PARTS
PUHZ-SHW80YAA.UK
PUHZ-SHW112YAA.UK
PUHZ-SHW80YAA-BS.UK
PUHZ-SHW112YAA-BS.UK

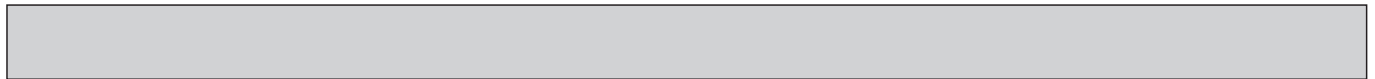




No.	Parts No.	Parts Name	Specification	Q'ty/unit				Remarks (Drawing No.)	Wiring Diagram Symbol
				PUHZ-SHW80YAA.UK	PUHZ-SHW112YAA.UK	PUHZ-SHW80YAA-BS.UK	PUHZ-SHW112YAA-BS.UK		
1	S70 E42 408H	HEAT EXCHANGER		1	1	1	1		
2	S70 E96 763	FAN MOTOR		1	1	1	1		MF1
3	S70 E50 115	PROPELLER FAN		1	1	1	1		
4	S70 K01 097	NUT		1	1	1	1		
5	S70 E74 202	THERMISTOR (COMP. SURFACE)		1	1	1	1		TH33
6	S70 E25 400	COMPRESSOR	DNK28FBBMT	1	1	1	1		MC
7	S70 E78 202	THERMISTOR (DISCHARGE)	D8	1	1	1	1		TH4
8	S70 E04 004	RUBBER MOUNT		4	4	4	4		
9	S70 600 418	STOP VALVE (LIQUID)	3/8'	1	1	1	1		
10	S70 E05 413	CHARGE PLUG		2	2	2	2		
11	S70 E06 411	BALL VALVE (GAS)	5/8'	1	1	1	1		
12	S70 36L 450	STRAINER	#50	1	1	1	1		
13	S70 E20 467	MUFFLER		1	1	1	1		
14	S70 E15 440H	RECEIVER		1	1	1	1		
15	S70 H20 209	LOW PRESSURE SWITCH		1	1	1	1		63L
16	S70 E79 202	THERMISTOR (SUCTION)	950XA	1	1	1	1		TH32
17	S70 E10 208H	HIGH PRESSURE SWITCH	OFF 4.14MPA	1	1	1	1		63H
18	S70 E11 208H	HIGH PRESSURE SENSOR		1	1	1	1		63HS
19	S70 E11 242	SOLENOID COIL <4WAY COIL>		1	1	1	1		21S4
20	S70 E08 403	REVERSING VALVE (4WAY VALVE)		1	1	1	1		
21	S70 E96 401	EXPANSION VALVE	UKV-25D251	2	2	2	2		
22	S70 E95 401	EXPANSION VALVE	UKV-18D124	1	1	1	1		
23	S70 E87 402	LINEAR EXPANSION VALVE COIL	UKV-A211	1	1	1	1		LEV-B
24	S70 E88 402	LINEAR EXPANSION VALVE COIL	UKV-A212	1	1	1	1		LEV-A
25	S70 E77 402	LINEAR EXPANSION VALVE COIL	UKV-A269	1	1	1	1		LEV-C
26	S70 E47 202	THERMISTOR-H (LIQUID)	1050 XAP	1	1	1	1		TH3
27	S70 E75 202	THERMISTOR-W (AMBIENT, 2-PHASE PIPE)	950/1150	1	1	1	1		TH6/7
28	S70 E05 005	COMP CASE BACK		1	1	1	1		
29	S70 K80 259	REACTOR		3	3	3	3		ACL1,2,3
30	S70 E35 315	CONTROLLER CIRCUIT BOARD		1	1	1	1		C.B.
31	S70 E85 346	NOISE FILTER CIRCUIT BOARD		1	1	1	1		N.F.
32	S70 E75 313	CONVERTOR CIRCUIT BOARD		1	1	1	1		CONV.B.
33	S70 E09 716	TERMINAL BLOCK	5P(L1,L2,L3,N,E)	1	1	1	1		TB1
34	S70 E08 716	TERMINAL BLOCK	3P(S1/S2/S3)	1	1	1	1		TB2
35	S70 E53 313	POWER CIRCUIT BOARD		1	1	1	1		P.B.
36	S70 K90 259	REACTOR		1	1	1	1		ACL4
37	S70 E20 234	RESISTOR		1	1	1	1		RS
38	S70 E81 255	CAPACITOR	30uF	1	1	1	1		CK
39	S70 E55 202	THERMISTOR (HEAT SINK)		1	1	1	1		TH8
40	S70 E07 008	COMP CASE TOP		1	1	1	1		
41	S70 E07 006H	COMP CASE FRONT		1	1	1	1		
42	S70 E05 007	COMP CASE SIDE		1	1	1	1		

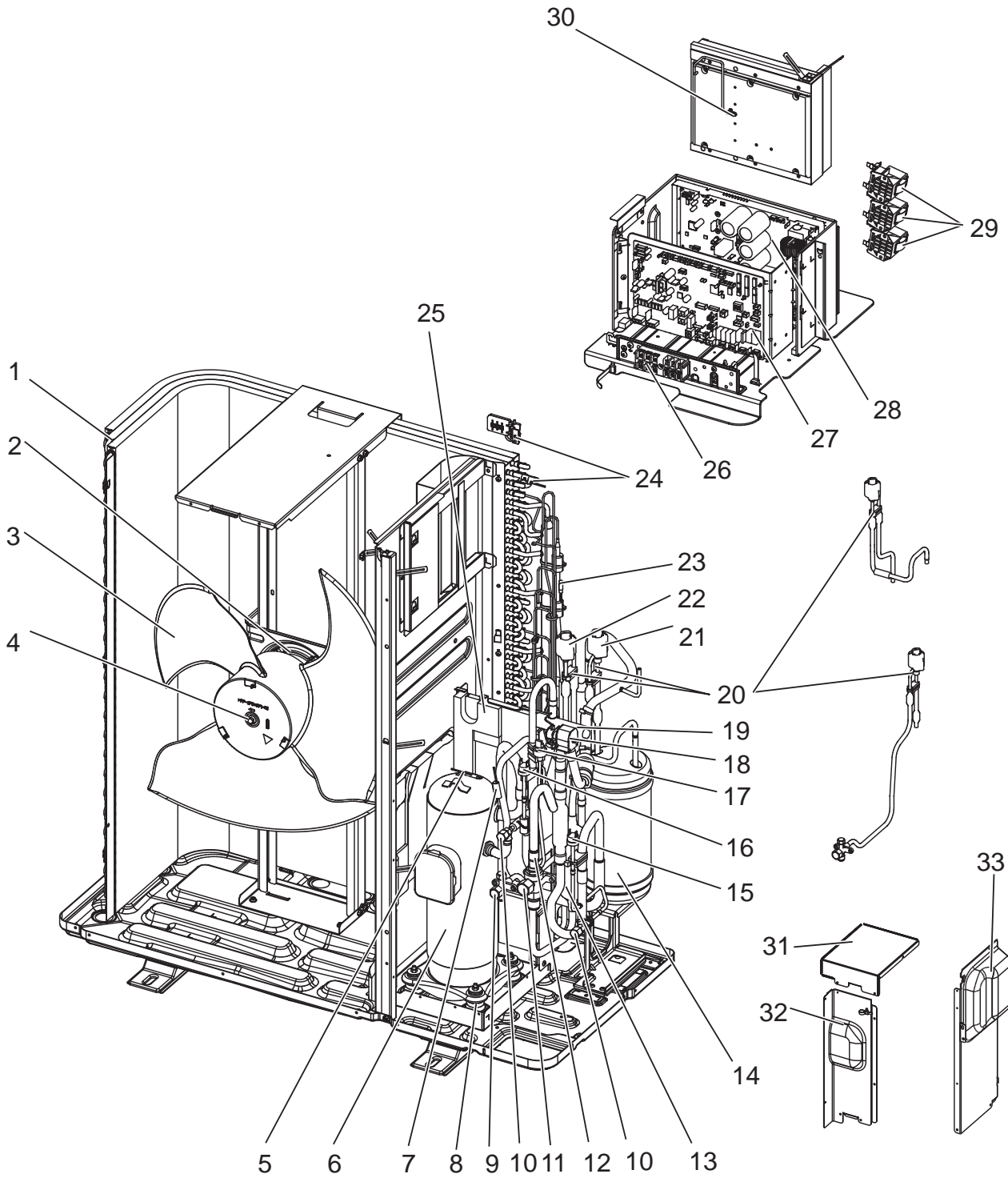
FUNCTIONAL AND ELECTRICAL PARTS
PUHZ-SW75VAA.UK
PUHZ-SW75VAA-BS.UK
PUHZ-SW75VAA-SC.UK

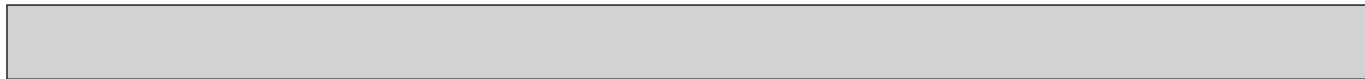




No.	Parts No.	Parts Name	Specification	Q'ty/unit			Remarks (Drawing No.)	Wiring Diagram Symbol
				PUHZ-SW75VAA.UK	PUHZ-SW75VAA-BS.UK	PUHZ-SW75VAA-SC.UK		
1	S70 E40 408H	HEAT EXCHANGER		1	1	1		
2	S70 E95 763	FAN MOTOR		1	1	1		MF1
3	S70 E50 115	PROPELLER FAN		1	1	1		
4	S70 K01 097	NUT		1	1	1		
5	S70 E37 400	COMPRESSOR	SNB220FEGMC-L1	1	1	1		MC
6	S70 E73 202	THERMISTOR (COMP. SURFACE)		1	1	1		TH33
7	S70 E77 202	THERMISTOR (DISCHARGE)		1	1	1		TH4
8	S70 E03 004	RUBBER MOUNT		3	3	3		
9	S70 E05 413	CHARGE PLUG		1	1	1		
10	S70 600 418	STOP VALVE (LIQUID)	3/8'	1	1	1		
11	S70 E06 411	BALL VALVE (GAS)	5/8'	1	1	1		
12	S70 E11 208H	HIGH PRESSURE SENSOR		1	1	1		63HS
13	S70 36L 450	STRAINER	#50	1	1	1		
14	S70 E30 467	MUFFLER		1	1	1		
15	S70 E10 208H	HIGH PRESSURE SWITCH	OFF 4.14MPA	1	1	1		63H
16	S70 E04 413	CHARGE PLUG		1	1	1		
17	S70 E10 242	SOLENOID COIL <4WAY COIL>		1	1	1		21S4
18	S70 E04 403	REVERSING VALVE		1	1	1		
19	S70 E15 440H	RECEIVER		1	1	1		
20	S70 E80 401	EXPANSION VALVE	UKV-18D35	2	2	2		
21	S70 E88 402	LINEAR EXPANSION VALVE COIL	UKV-A212	1	1	1		LEV-A
22	S70 E87 402	LINEAR EXPANSION VALVE COIL	UKV-A211	1	1	1		LEV-B
23	S70 E47 202	THERMISTOR-H (LIQUID)	1050 XAP	1	1	1		TH3
24	S70 E75 202	THERMISTOR-W (AMBIENT, 2-PHASE PIPE)	950/1150	1	1	1		TH6/7
25	S70 E06 005	COMP CASE BACK		1	1	1		
26	S70 E11 716	TERMINAL BLOCK	6P(L,N,E + S1,S2,S3)	1	1	1		TB1
27	S70 E25 315	CONTROLLER CIRCUIT BOARD		1	1	1		C.B.
28	S70 E50 313	POWER CIRCUIT BOARD		1	1	1		P.B.
29	S70 K95 259	REACTOR	18mH	3	3	3		DCL1,2,3
30	S70 E76 202	THERMISTOR (HEAT SINK)		1	1	1		TH8
31	S70 E06 008	COMP CASE TOP		1	1	1		
32	S70 E06 006H	COMP CASE FRONT		1	1	1		
33	S70 E06 007	COMP CASE SIDE		1	1	1		

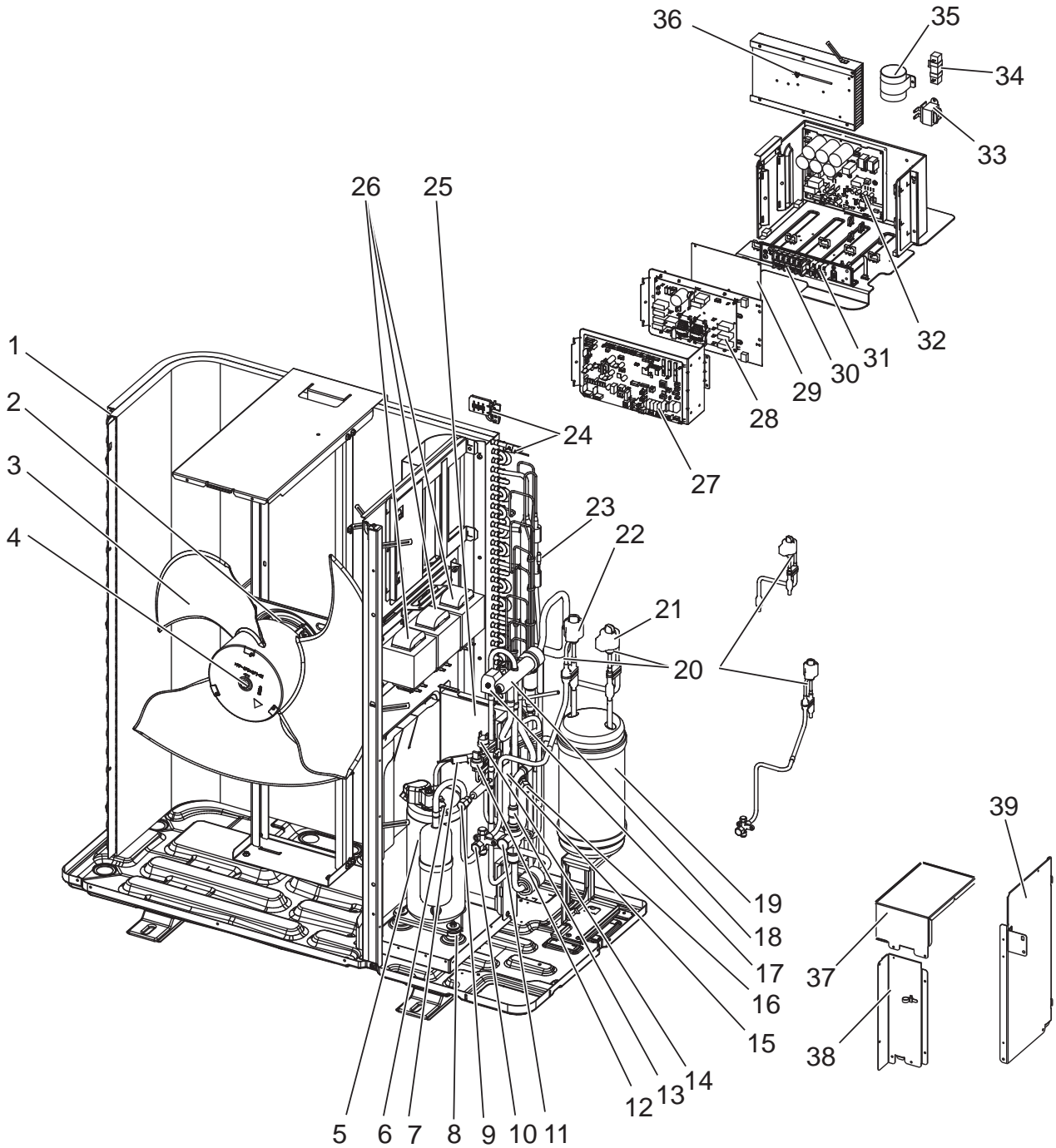
FUNCTIONAL AND ELECTRICAL PARTS
PUHZ-SW100VAA.UK
PUHZ-SW100VAA-BS.UK

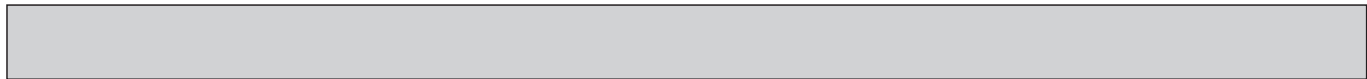




No.	Parts No.	Parts Name	Specification	Q'ty/unit		Remarks (Drawing No.)	Wiring Diagram Symbol
				PUHZ-SW100VAA.UK	PUHZ-SW100VAA-BS.UK		
1	S70 E42 408H	HEAT EXCHANGER		1	1		
2	S70 E96 763	FAN MOTOR		1	1		MF1
3	S70 E50 115	PROPELLER FAN		1	1		
4	S70 K01 097	NUT		1	1		
5	S70 E74 202	THERMISTOR (COMP. SURFACE)		1	1		TH33
6	S70 E39 400	COMPRESSOR	DNB28FBAMT	1	1		MC
7	S70 E78 202	THERMISTOR (DISCHARGE)		1	1		TH4
8	S70 E04 004	RUBBER MOUNT		4	4		
9	S70 600 418	STOP VALVE (LIQUID)	3/8'	1	1		
10	S70 E05 413	CHARGE PLUG		2	2		
11	S70 E06 411	BALL VALVE (GAS)	5/8'	1	1		
12	S70 36L 450	STRAINER	#50	1	1		
13	S70 E20 467	MUFFLER		1	1		
14	S70 E15 440H	RECEIVER		1	1		
15	S70 H20 209	LOW PRESSURE SWITCH		1	1		63L
16	S70 E10 208H	HIGH PRESSURE SWITCH	OFF 4.14MPA	1	1		63H
17	S70 E11 208H	HIGH PRESSURE SENSOR		1	1		63HS
18	S70 E11 242	SOLENOID COIL <4WAY COIL>		1	1		21S4
19	S70 E08 403	REVERSING VALVE		1	1		
20	S70 E96 401	EXPANSION VALVE	UKV-25D251	2	2		
21	S70 E87 402	LINEAR EXPANSION VALVE COIL	UKV-A211	1	1		LEV-B
22	S70 E88 402	LINEAR EXPANSION VALVE COIL	UKV-A212	1	1		LEV-A
23	S70 E47 202	THERMISTOR-H (LIQUID)	1050 XAP	1	1		TH3
24	S70 E75 202	THERMISTOR-W (AMBIENT, 2-PHASE PIPE)	950/1150	1	1		TH6/7
25	S70 E07 005	COMP CASE BACK		1	1		
26	S70 E11 716	TERMINAL BLOCK	6P(L,N,E + S1,S2,S3)	1	1		TB1
27	S70 E25 315	CONTROLLER CIRCUIT BOARD		1	1		C.B.
28	S70 E51 313	POWER CIRCUIT BOARD		1	1		P.B.
29	S70 K95 259	REACTOR	18mH	3	3		DCL1,2,3
30	S70 E76 202	THERMISTOR (HEAT SINK)		1	1		TH8
31	S70 E07 008	COMP CASE TOP		1	1		
32	S70 E07 006H	COMP CASE FRONT		1	1		
33	S70 E05 007	COMP CASE SIDE		1	1		

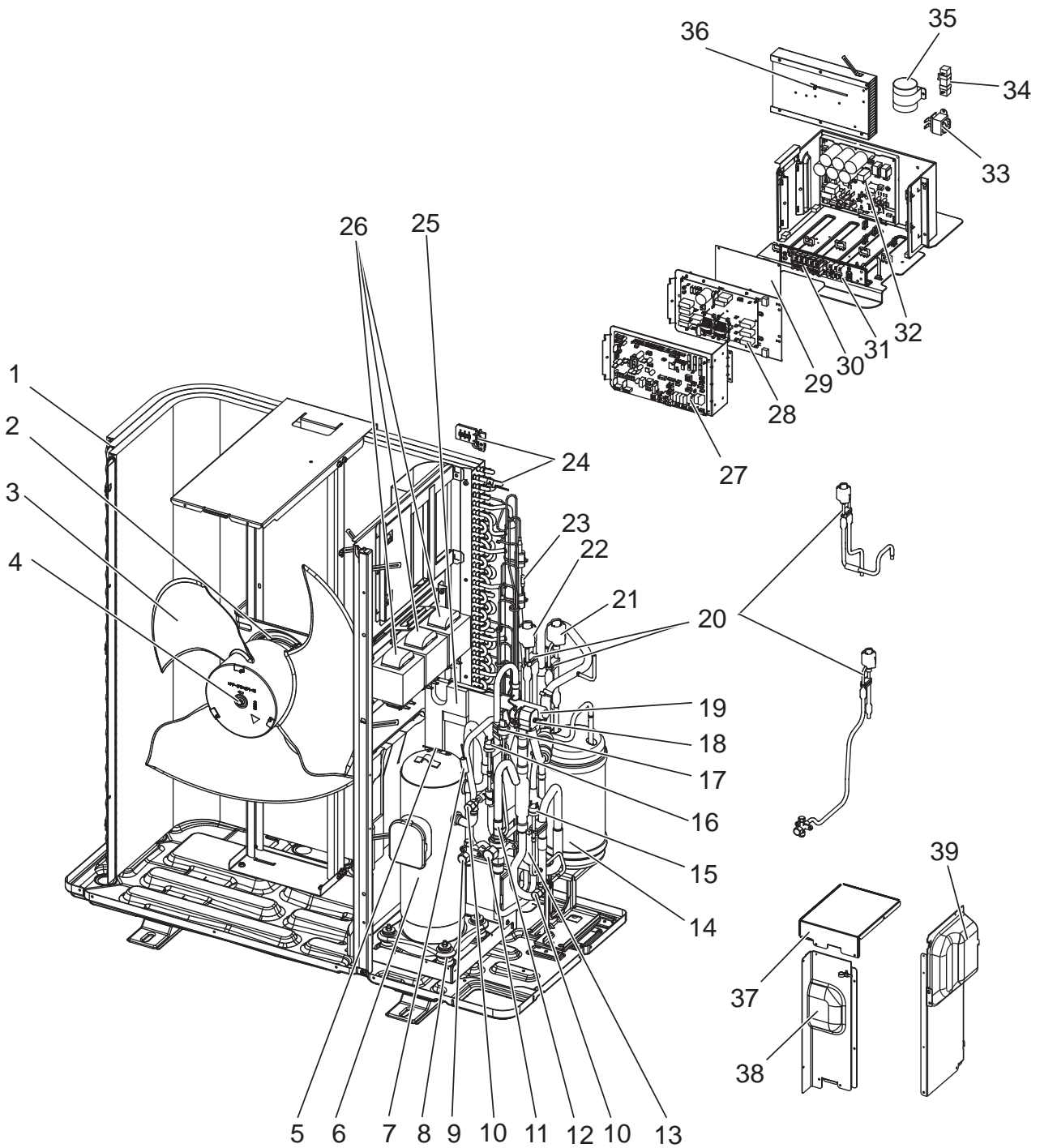
FUNCTIONAL AND ELECTRICAL PARTS
PUHZ-SW75YAA.UK
PUHZ-SW75YAA-BS.UK
PUHZ-SW75YAA-SC.UK

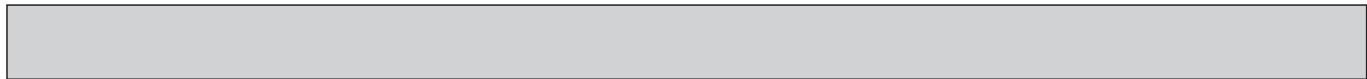




No.	Parts No.	Parts Name	Specification	Q'ty/unit			Remarks (Drawing No.)	Wiring Diagram Symbol
				PUHZ-SW75YAA.UK	PUHZ-SW75YAA+BS.UK	PUHZ-SW75YAA-SC.UK		
1	S70 E40 408H	HEAT EXCHANGER		1	1	1		
2	S70 E95 763	FAN MOTOR		1	1	1		MF1
3	S70 E50 115	PROPELLER FAN		1	1	1		
4	S70 K01 097	NUT		1	1	1		
5	S70 E38 400	COMPRESSOR	SNB220FEAMC-L1	1	1	1		MC
6	S70 E73 202	THERMISTOR (COMP. SURFACE)		1	1	1		TH33
7	S70 E77 202	THERMISTOR (DISCHARGE)		1	1	1		TH4
8	S70 E03 004	RUBBER MOUNT		3	3	3		
9	S70 E05 413	CHARGE PLUG		1	1	1		
10	S70 600 418	STOP VALVE (LIQUID)	3/8'	1	1	1		
11	S70 E06 411	BALL VALVE (GAS)	5/8'	1	1	1		
12	S70 E11 208H	HIGH PRESSURE SENSOR		1	1	1		63HS
13	S70 36L 450	STRAINER	#50	1	1	1		
14	S70 E10 208H	HIGH PRESSURE SWITCH	OFF 4.14MPA	1	1	1		63H
15	S70 E30 467	MUFFLER		1	1	1		
16	S70 E04 413	CHARGE PLUG		1	1	1		
17	S70 E10 242	SOLENOID COIL <4WAY COIL>		1	1	1		21S4
18	S70 E04 403	REVERSING VALVE		1	1	1		
19	S70 E15 440H	RECEIVER		1	1	1		
20	S70 E80 401	EXPANSION VALVE	UKV-18D35	2	2	2		
21	S70 E88 402	LINEAR EXPANSION VALVE COIL	UKV-A212	1	1	1		LEV-A
22	S70 E87 402	LINEAR EXPANSION VALVE COIL	UKV-A211	1	1	1		LEV-B
23	S70 E47 202	THERMISTOR-H (LIQUID)	1050 XAP	1	1	1		TH3
24	S70 E75 202	THERMISTOR-W (AMBIENT, 2-PHASE PIPE)	950/1150	1	1	1		TH6/7
25	S70 E06 005	COMP CASE BACK		1	1	1		
26	S70 K80 259	REACTOR		3	3	3		ACL1,2,3
27	S70 E25 315	CONTROLLER CIRCUIT BOARD		1	1	1		C.B.
28	S70 E85 346	NOISE FILTER CIRCUIT BOARD		1	1	1		N.F.
29	S70 E75 313	CONVERTOR CIRCUIT BOARD		1	1	1		CONV.B.
30	S70 E09 716	TERMINAL BLOCK	5P(S1,S2,S3,N,E)	1	1	1		TB1
31	S70 E08 716	TERMINAL BLOCK	3P(S1/S2/S3)	1	1	1		TB2
32	S70 E52 313	POWER CIRCUIT BOARD		1	1	1		P.B.
33	S70 K90 259	REACTOR		1	1	1		ACL4
34	S70 E20 234	RESISTOR		1	1	1		RS
35	S70 E81 255	CAPACITOR	30uF	1	1	1		CK
36	S70 E55 202	THERMISTOR (HEAT SINK)		1	1	1		TH8
37	S70 E06 008	COMP CASE TOP		1	1	1		
38	S70 E06 006H	COMP CASE FRONT		1	1	1		
39	S70 E06 007	COMP CASE SIDE		1	1	1		

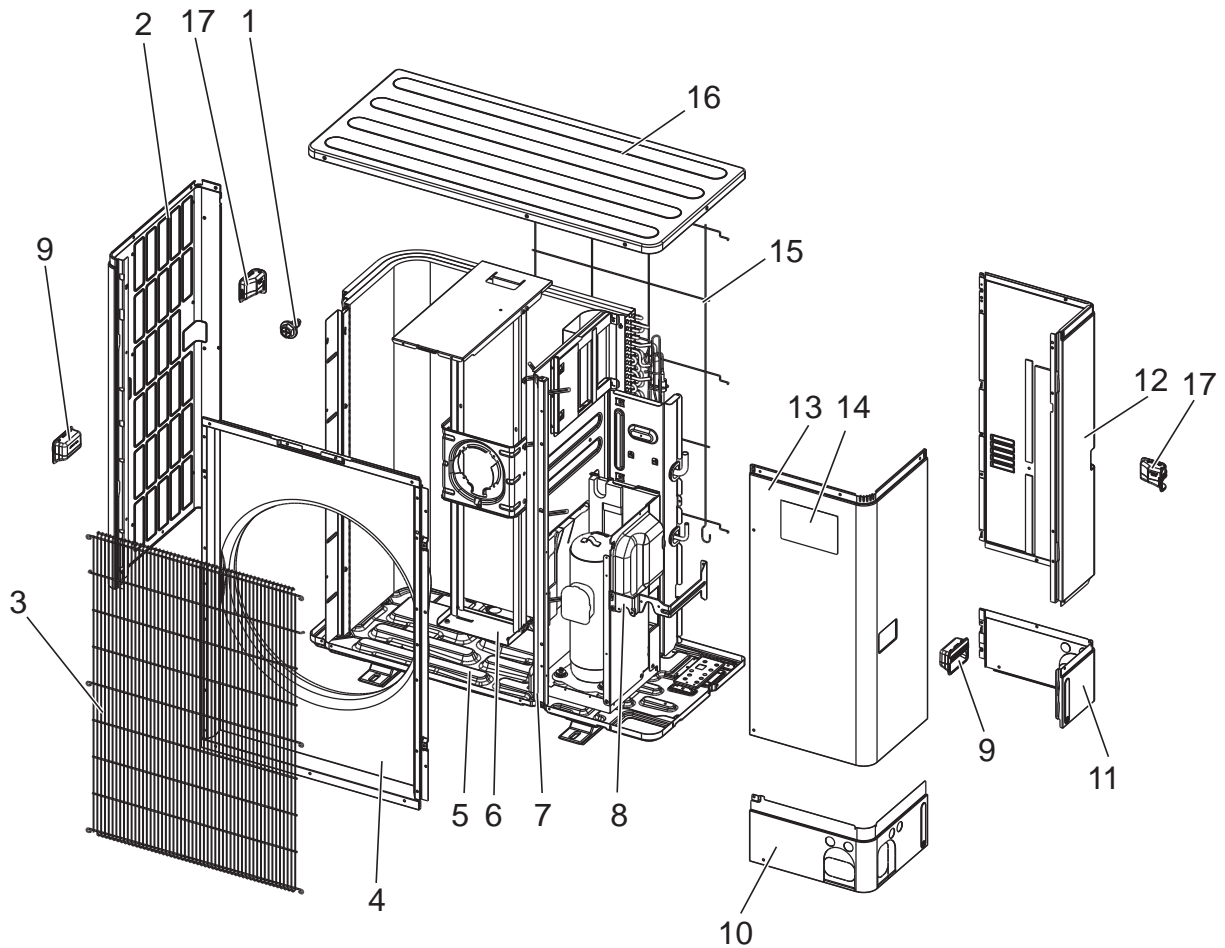
FUNCTIONAL AND ELECTRICAL PARTS
PUHZ-SW100YAA.UK
PUHZ-SW100YAA-BS.UK





No.	Parts No.	Parts Name	Specification	Q'ty/unit		Remarks (Drawing No.)	Wiring Diagram Symbol
				PUHZ-SW100YAA.UK	PUHZ-SW100YAA-BS.UK		
1	S70 E42 408H	HEAT EXCHANGER		1	1		
2	S70 E96 763	FAN MOTOR		1	1		MF1
3	S70 E50 115	PROPELLER FAN		1	1		
4	S70 K01 097	NUT		1	1		
5	S70 E74 202	THERMISTOR (COMP. SURFACE)		1	1		TH33
6	S70 E23 400	COMPRESSOR	DNB28FBBMT	1	1		MC
7	S70 E78 202	THERMISTOR (DISCHARGE)		1	1		TH4
8	S70 E04 004	RUBBER MOUNT		4	4		
9	S70 600 418	STOP VALVE (LIQUID)	3/8'	1	1		
10	S70 E05 413	CHARGE PLUG		2	2		
11	S70 E06 411	BALL VALVE (GAS)	5/8'	1	1		
12	S70 36L 450	STRAINER	#50	1	1		
13	S70 E20 467	MUFFLER		1	1		
14	S70 E15 440H	RECEIVER		1	1		
15	S70 H20 209	LOW PRESSURE SWITCH		1	1		63L
16	S70 E10 208H	HIGH PRESSURE SWITCH	OFF 4.14MPA	1	1		63H
17	S70 E11 208H	HIGH PRESSURE SENSOR		1	1		63HS
18	S70 E11 242	SOLENOID COIL <4WAY COIL>		1	1		21S4
19	S70 E08 403	REVERSING VALVE		1	1		
20	S70 E96 401	EXPANSION VALVE	UKV-25D251	2	2		
21	S70 E87 402	LINEAR EXPANSION VALVE COIL	UKV-A211	1	1		LEV-B
22	S70 E88 402	LINEAR EXPANSION VALVE COIL	UKV-A212	1	1		LEV-A
23	S70 E47 202	THERMISTOR-H (LIQUID)	1050 XAP	1	1		TH3
24	S70 E75 202	THERMISTOR-W (AMBIENT, 2-PHASE PIPE)	950/1150	1	1		TH6/7
25	S70 E07 005	COMP CASE BACK		1	1		
26	S70 K80 259	REACTOR		3	3		ACL1,2,3
27	S70 E25 315	CONTROLLER CIRCUIT BOARD		1	1		C.B.
28	S70 E85 346	NOISE FILTER CIRCUIT BOARD		1	1		N.F.
29	S70 E75 313	CONVERTOR CIRCUIT BOARD		1	1		CONV.B.
30	S70 E09 716	TERMINAL BLOCK	5P(S1,S2,S3,N,E)	1	1		TB1
31	S70 E08 716	TERMINAL BLOCK	3P(S1/S2/S3)	1	1		TB2
32	S70 E53 313	POWER CIRCUIT BOARD		1	1		P.B.
33	S70 K90 259	REACTOR		1	1		ACL4
34	S70 E20 234	RESISTOR		1	1		RS
35	S70 E81 255	CAPACITOR	30uF	1	1		CK
36	S70 E55 202	THERMISTOR (HEAT SINK)		1	1		TH8
37	S70 E07 008	COMP CASE TOP		1	1		
38	S70 E07 006H	COMP CASE FRONT		1	1		
39	S70 E05 007	COMP CASE SIDE		1	1		

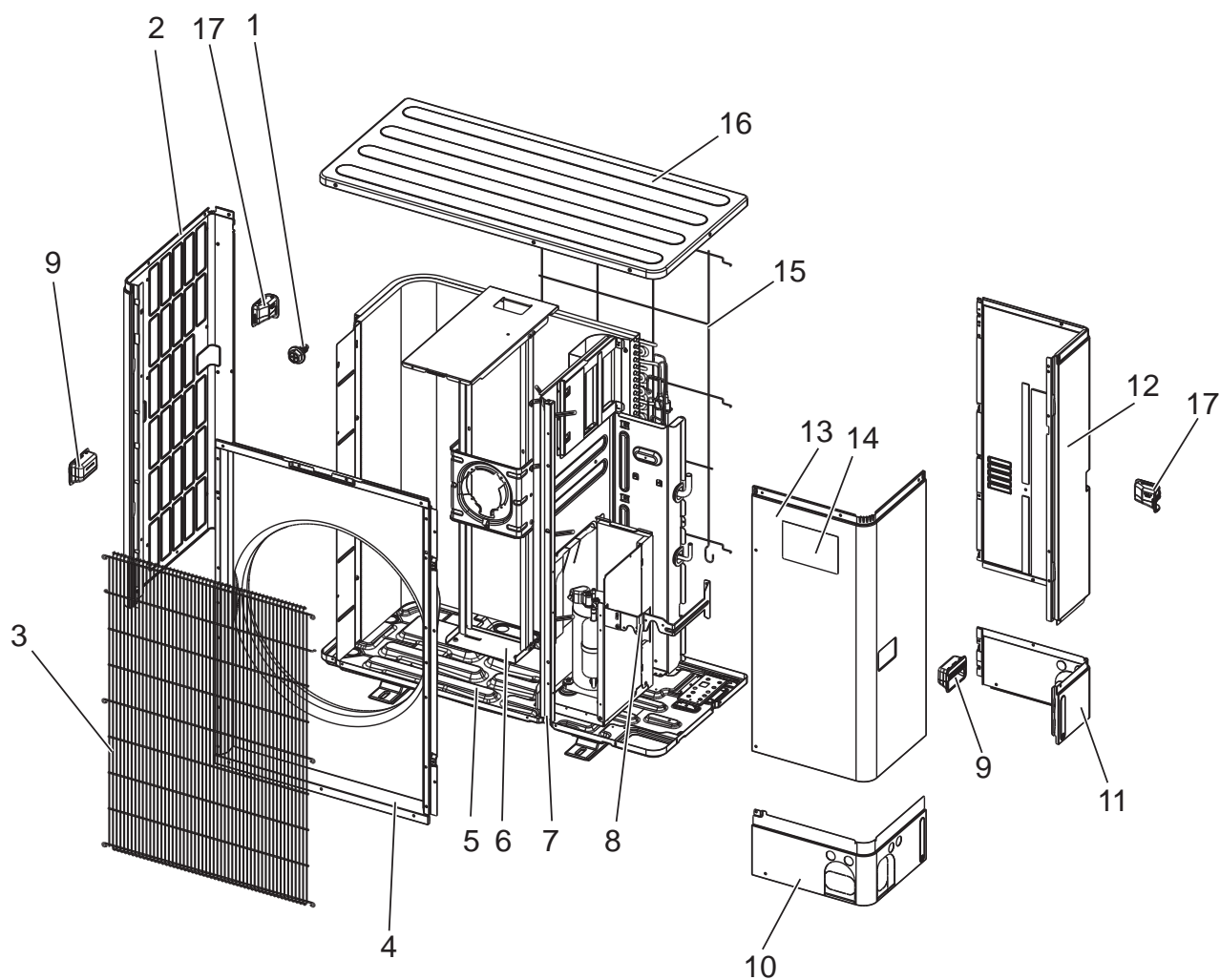
STRUCTURAL PARTS
PUHZ-SHW80VAA.UK
PUHZ-SHW112VAA.UK
PUHZ-SHW80VAA-BS.UK
PUHZ-SHW112VAA-BS.UK
PUHZ-SHW80YAA.UK
PUHZ-SHW112YAA.UK
PUHZ-SHW80YAA-BS.UK
PUHZ-SHW112YAA-BS.UK
PUHZ-SW100VAA.UK
PUHZ-SW100VAA-BS.UK
PUHZ-SW100YAA.UK
PUHZ-SW100YAA-BS.UK





No.	Parts No.	Parts Name	Specifi- cation	Q'ty/unit											Remarks (Drawing No.)
				PUHZ-SHW80VAA.UK	PUHZ-SHW80VAA-BS.UK	PUHZ-SHW112VAA.UK	PUHZ-SHW112VAA-BS.UK	PUHZ-SHW80YAA.UK	PUHZ-SHW80YAA-BS.UK	PUHZ-SHW112YAA.UK	PUHZ-SHW112YAA-BS.UK	PUHZ-SW100VAA.UK	PUHZ-SW100VAA-BS.UK	PUHZ-SW100YAA.UK	
1	—	F.ST SCREW	(5x12)	62	62	62	62	62	62	62	62	62	62	62	(DG12F536H12)
2	S70 E22 662	SIDE PANEL (L)		1		1		1		1		1		1	
	S70 E23 662	SIDE PANEL (L)			1		1		1		1		1		1
3	S70 E04 675	WIRE GRILLE		1	1	1	1	1	1	1	1	1	1	1	
4	S70 E73 668	FRONT PANEL		1		1		1		1		1		1	
	S70 E74 668	FRONT PANEL			1		1		1		1		1		1
5	S70 E17 686	BASE ASSY		1		1		1		1		1		1	
	S70 E18 686	BASE ASSY			1		1		1		1		1		1
6	S70 E78 130	MOTOR SUPPORT		1		1		1		1		1		1	
	S70 E79 130	MOTOR SUPPORT			1		1		1		1		1		1
7	—	SEPARATOR		1		1						1			(BK00V807G21)
	—	SEPARATOR			1		1					1			(BK00V807G22)
	—	SEPARATOR						1		1				1	(BK00V807G27)
	—	SEPARATOR							1		1			1	(BK00V807G28)
8	—	STOP VALVE BED		1	1	1	1	1	1	1	1	1	1	1	(BK02Y986G01)
9	S70 E40 655	HANDLE (FRONT)		2	2	2	2	2	2	2	2	2	2	2	
10	S70 E71 658	COVER PANEL (FRONT)		1		1		1		1		1		1	
	S70 E72 658	COVER PANEL (FRONT)			1		1		1		1		1		1
11	S70 E73 658	COVER PANEL (REAR)		1		1		1		1		1		1	
	S70 E74 658	COVER PANEL (REAR)			1		1		1		1		1		1
12	S70 E53 662	SIDE PANEL(R)		1		1		1		1		1		1	
	S70 E54 662	SIDE PANEL(R)			1		1		1		1		1		1
13	S70 E91 661	SERVICE PANEL		1		1		1		1		1		1	
	S70 E92 661	SERVICE PANEL			1		1		1		1		1		1
14	S70 E96 699	BRAND LABEL (ZUBADAN)		1	1	1	1	1	1	1	1				
	S70 E95 699	BRAND LABEL (ECODAN)										1	1	1	1
15	S70 E40 698	REAR GUARD		1	1	1	1	1	1	1	1	1	1	1	
16	S70 E70 641	TOP PANEL		1		1		1		1		1		1	
	S70 E80 641	TOP PANEL			1		1		1		1		1		1
17	S70 E50 655	HANDLE (REAR)		2	2	2	2	2	2	2	2	2	2	2	

STRUCTURAL PARTS
PUHZ-SW75VAA.UK
PUHZ-SW75YAA.UK
PUHZ-SW75VAA-BS.UK
PUHZ-SW75YAA-BS.UK
PUHZ-SW75VAA-SC.UK
PUHZ-SW75YAA-SC.UK





No.	Parts No.	Parts Name	Specifi- cation	Q'ty/unit						Remarks (Drawing No.)
				PUHZ-SW75VAA.UK	PUHZ-SW75VAA-BS.UK	PUHZ-SW75VAA-SC.UK	PUHZ-SW75YAA.UK	PUHZ-SW75YAA-BS.UK	PUHZ-SW75YAA-SC.UK	
1	—	F.ST SCREW	(5x12)	62	62	62	62	62	62	(DG12F536H12)
2	S70 E22 662	SIDE PANEL (L)		1		1	1		1	
	S70 E23 662	SIDE PANEL (L)			1			1		
3	S70 E04 675	WIRE GRILLE		1	1	1	1	1	1	
4	S70 E73 668	FRONT PANEL		1		1	1		1	
	S70 E74 668	FRONT PANEL			1			1		
5	S70 E15 686	BASE ASSY		1		1	1		1	
	S70 E16 686	BASE ASSY			1			1		
6	S70 E76 130	MOTOR SUPPORT		1		1	1		1	
	S70 E77 130	MOTOR SUPPORT			1			1		
7	—	SEPARATOR		1		1				(BK00V807G17)
	—	SEPARATOR			1					(BK00V807G18)
	—	SEPARATOR					1		1	(BK00V807G25)
	—	SEPARATOR						1		(BK00V807G26)
8	—	STOP VALVE BED		1	1	1	1	1	1	(BK02Y986G01)
9	S70 E40 655	HANDLE (FRONT)		2	2	2	2	2	2	
10	S70 E71 658	COVER PANEL (FRONT)		1		1	1		1	
	S70 E72 658	COVER PANEL (FRONT)			1			1		
11	S70 E73 658	COVER PANEL (REAR)		1		1	1		1	
	S70 E74 658	COVER PANEL (REAR)			1			1		
12	S70 E53 662	SIDE PANEL(R)		1		1	1		1	
	S70 E54 662	SIDE PANEL(R)			1			1		
13	S70 E91 661	SERVICE PANEL		1		1	1		1	
	S70 E92 661	SERVICE PANEL			1			1		
14	S70 E95 699	BRAND LABEL (ECODAN)		1	1	1	1	1	1	
15	S70 E40 698	REAR GUARD		1	1	1	1	1	1	
16	S70 E70 641	TOP PANEL		1		1	1		1	
	S70 E80 641	TOP PANEL			1			1		
17	S70 E50 655	HANDLE (REAR)		2	2	2	2	2	2	

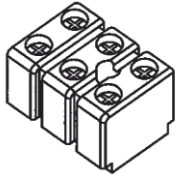
CONNECTOR FOR DRAIN HOSE HEATER

Parts No.

PAC-SE60RA-E

Contents

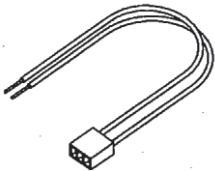
① Terminal block ×1



② Screw ×1

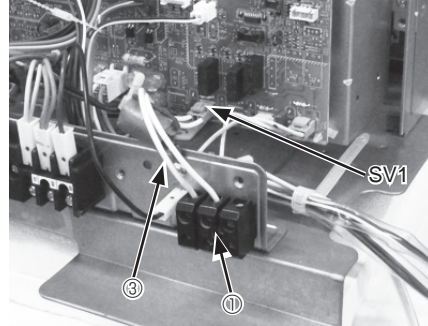


③ Lead wire with connector ×1

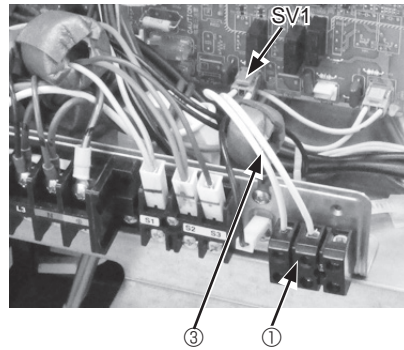


Installation

● PUAZ-***VAA models



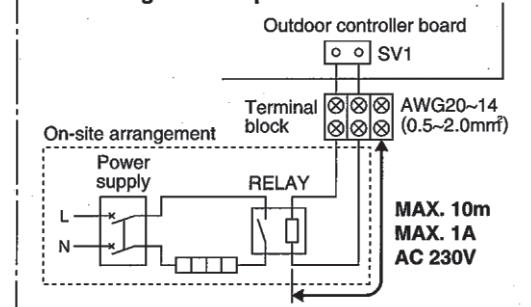
● PUAZ-***YAA models



1. Attach the terminal block ①, with the screw ②.
2. Connect the lead wire ③ connector side to SV1 port on the outdoor controller board.
3. Connect the lead wire ③ to the terminal block ①.
4. Wire local cables for a drain hose heater RELAY to the terminal block ①.

- Drain hose heater RELAY connection only
- MAX current 1A

Circuit diagram example



SV1 on the controller board
→ Drain hose heater signal output
With PAC-SE60RA-E

From defrost start
For 15 min. ON signal provided

AIR DISCHARGE GUIDE

Parts No.

PAC-SH96SG-E

AIR PROTECTION GUIDE

Parts No.

PAC-SH95AG-E

ATTACHMENT (AIR DISCHARGE GUIDE/AIR PROTECTION GUIDE)

Parts No.

PAC-SJ82AT

DRAIN SOCKET

Parts No.

PAC-SG61DS-E

CENTRALISED DRAIN PAN

Parts No.

PAC-SJ83DP

SNOW GUARD FRONT

Parts No.

PAC-SNH11AF-E

SNOW GUARD SIDE

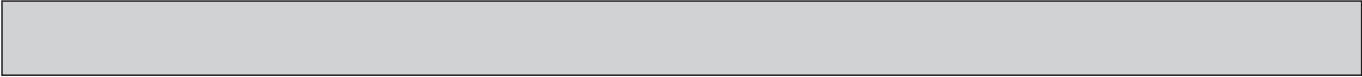
Parts No.

PAC-SNH11AS-E

SNOW GUARD BACK

Parts No.

PAC-SNH11AB-E



MITSUBISHI ELECTRIC CORPORATION

HEAD OFFICE : TOKYO BUILDING, 2-7-3, MARUNOUCHI, CHIYODA-KU, TOKYO 100-8310, JAPAN
