

PARTS CATALOG

R410A

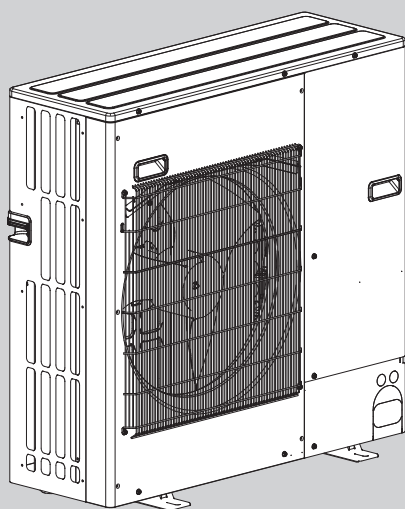
Outdoor unit
[Model Name]
PUHZ-FRP71VHA2

[Service Ref.]

PUHZ-FRP71VHA2
PUHZ-FRP71VHA2R1

Note:
• PUHZ-FRP71VHA2R1
has been added in
REVISED EDITION-B.

OCB665 REVISED
EDITION-A is void.



PUHZ-FRP71VHA2

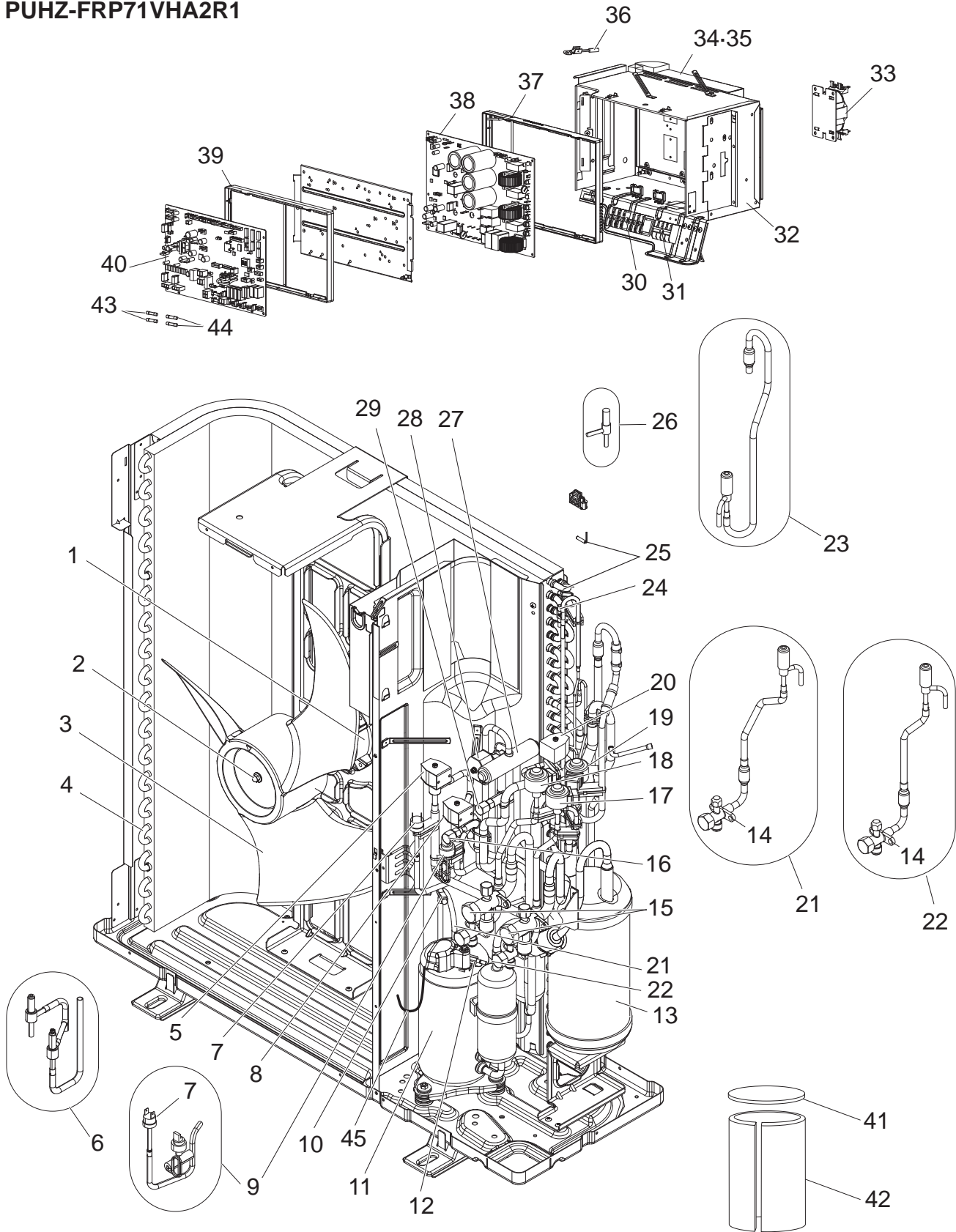
CONTENTS

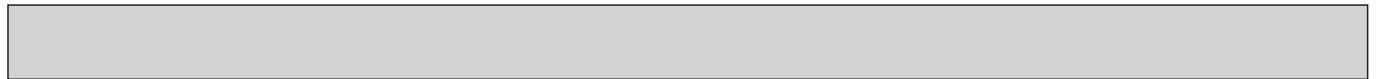
1. SERVICE PARTS LIST 2

SERVICE MANUAL (OCH665)

FUNCTIONAL AND ELECTRICAL PARTS

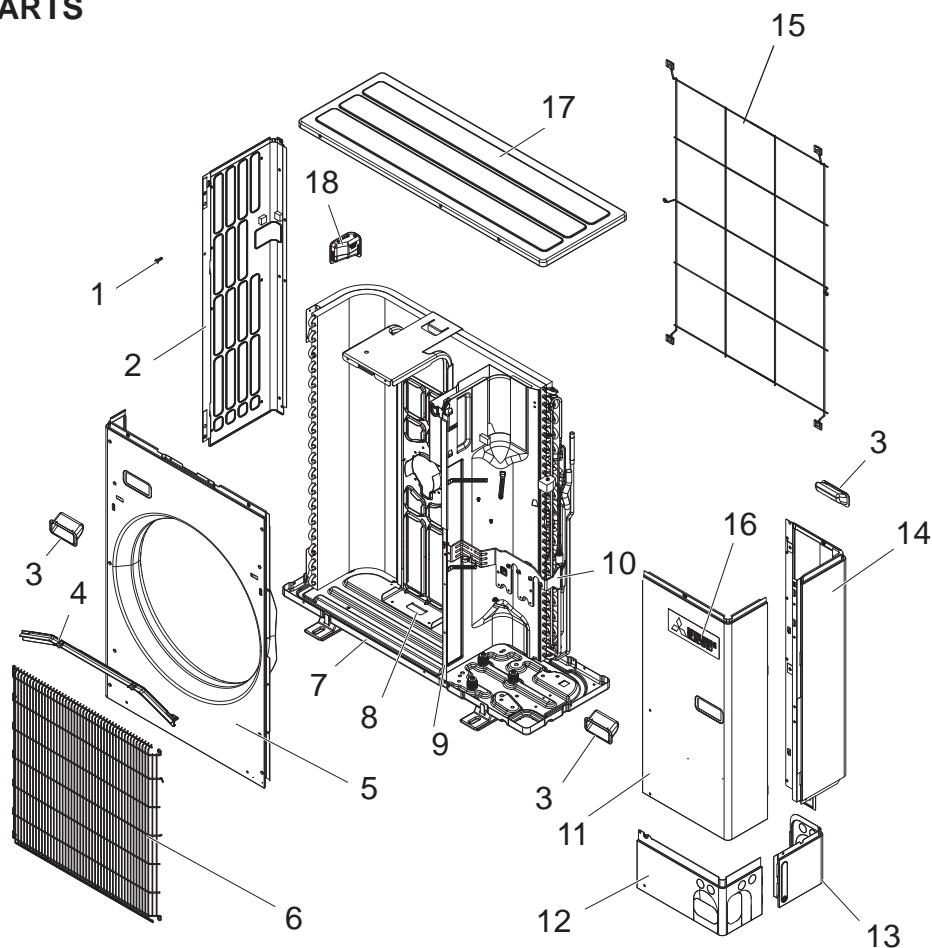
**PUHZ-FRP71VHA2
PUHZ-FRP71VHA2R1**





No.	Part No.	Part Name	Specification	Q'ty/unit		Remarks (Drawing No.)	Wiring Diagram Symbol
				PUHZ-FRP 71VHA2	PUHZ-FRP 71VHA2R1		
1	R01 E72 221	FAN MOTOR		1	1		MF1
2	R01 E16 097	CAP NUT (MEC) M6		1	1		
3	R01 E12 115	PROPELLER FAN		1	1		
4	T7W H83 408	HEAT EXCHANGER		1	1		
5	T7W H64 242	SOLENOID COIL (SV)		1	1	CONNECTOR: BLUE	SV2
6	T7W H10 428	SV ASSY		1	1		SV1, SV2
7	R01 H06 208	HIGH PRESSURE SWITCH	4.14MPa	1	1		63H
8	T7W H63 242	SOLENOID COIL (SV)		1	1	CONNECTOR: GRAY	SV1
9	T7W H08 208	H.P. SW & SENSOR ASSY		1	1	Includes 63H	63HS
10	R01 E37 201	THERMISTOR (DIS)		1	1		TH4
11	T92 20G 607	COMPRESSOR	SNB172FSHM1	1	1	Includes RUBBER MOUNT	MC
12	R01 E45 201	THERMISTOR (SHELL)		1	1		TH33
13	T7W H29 440	ACCUMULATOR		1	1		
14	R01 E25 410	STOP VALVE 3/8F	3/8	2			
15	R01 E24 410	STOP VALVE 5/8F	5/8	2	2	Includes STRAINER	
16	R01 E24 413	CHARGE PLUG/LB90		1	1		
17	R01 H19 242	COIL (LEV)/XAP-5P RED		1	1		LEV-B
18	R01 H20 242	COIL (LEV)/XAP-5P BLU		1	1		LEV-C
19	R01 H18 242	COIL (LEV)/XAP-5P WH		1	1		LEV-A
20	T7W H65 242	SOLENOID COIL (SV)		1	1	CONNECTOR: WHITE	SV3
21	T7W H99 401	LEV ASSY-C		1	1	Includes STOP VALVE	LEV-C
22	T7W H98 401	LEV ASSY-B		1	1	Includes STOP VALVE	LEV-B
23	T7W H97 401	LEV ASSY-A		1	1		LEV-A
24	R01 H87 202	THERMISTOR		1	1		TH3
25	R01 M18 202	THERMISTOR W		1	1		TH6, 7
26	R01 E15 428	SOLENOID VALVE		1	1		SV3
27	R01 E13 403	4WAY VALVE		1	1		21S4
28	T7W H39 242	SOLENOID COIL (21S4)		1	1		21S4
29	R01 E18 413	CHARGE PLUG/ST		1	1		
30	T7W E71 716	T.B./LNE.S1.S2.S3	6P (L,N,0,S1,S2,S3)	1	1		TB1
31	R01 E19 246	T.B./S1.S2.S3	3P (S1,S2,S3)	1	1		TB2
32	-	ELECTRICAL PARTS BOX		1	1	(BK00B472G92)	
33	T7W E27 259	REACTOR		1	1		DCL
34	T7W A04 371	HEAT SINK		1	1	Includes SCREWS	
35	-	HEAT SINK CASE		1	1	(BK00T163G02)	
36	R01 M13 202	THERMISTOR (HS)		1	1		TH8
37	-	BOARD CASE POWER		1	1	(BK25V224G01)	
38	T7W B80 323	POWER BOARD		1			P.B.
	T7W S04 323	POWER BOARD			1		P.B.
39	-	BOARD CASE CONT		1	1	(BK25J874G02)	
40	T7W HM0 315	CONTROLLER BOARD		1			C.B.
	T7W S08 315	CONTROLLER BOARD			1		C.B.
41	R01 A59 602	COMP FELT (TOP)		1	1		
42	T7W A10 602	COMP FELT (BODY)		1	1		
43	R01 E21 239	FUSE 10A 250V	10A 250V	2	2		F1, 2
44	R01 E14 239	FUSE 6.3A 250V	6.3A 250V	2	2		F3, 4
45	T7W A14 510	LEAD ASSY COMP		1	1		

STRUCTURAL PARTS



No.	Part No.	Part Name	Specification	Q'ty/unit		Remarks (Drawing No.)	Wiring Diagram Symbol
				PUHZ-FRP 71VHA2	PUHZ-FRP 71VHA2R1		
1	-	F.ST. SCREW		30	30	(BT12L041H12)	
2	T7W E12 662	SIDE PANEL (L)		1	1		
3	R01 E01 655	HANDLE		3	3		
4	R01 E01 631	ICE GUARD		1			
5	R01 E22 668	FRONT PANEL		1	1		
6	T7W E12 691	WIRE GRILLE		1	1		
7	R01 E56 686	BASE ASSY		1	1		
8	T7W E20 130	MOTOR SUPPORT		1	1		
9	-	SEPARATOR		1	1	(BK00C374GZ9)	
10	-	VALVE BED		1	1	(BK00J581G03)	
11	T7W E10 667	SERVICE PANEL		1	1		
12	R01 E40 658	COVER PANEL (FRONT)		1	1		
13	R01 E24 658	COVER PANEL (REAR)		1	1		
14	T7W E41 661	SIDE PANEL (R)		1	1		
15	T7W E07 698	REAR GUARD		1	1		
16	T7W A00 005	BRAND LABEL (ME)		1	1		
17	T7W E16 641	TOP PANEL		1	1		
18	R01 E06 655	HANDLE (REAR)		1	1		

MITSUBISHI ELECTRIC CORPORATION

HEAD OFFICE: TOKYO BUILDING, 2-7-3, MARUNOUCHI, CHIYODA-KU, TOKYO 100-8310, JAPAN