

SERVICE PARTS LIST FOR MITSUBISHI ELECTRIC REFRIGERATION SYSTEMS:HOT WATER HEAT PUMP UNIT

Series : CAHV-P•YB-HPB(-BS)

REVISED

Mar. 2020

BWE01503A

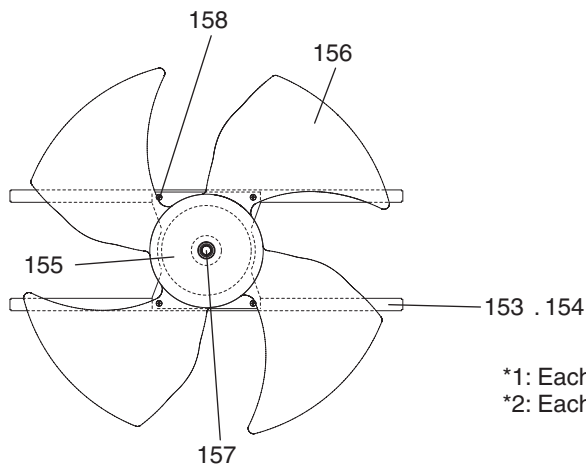
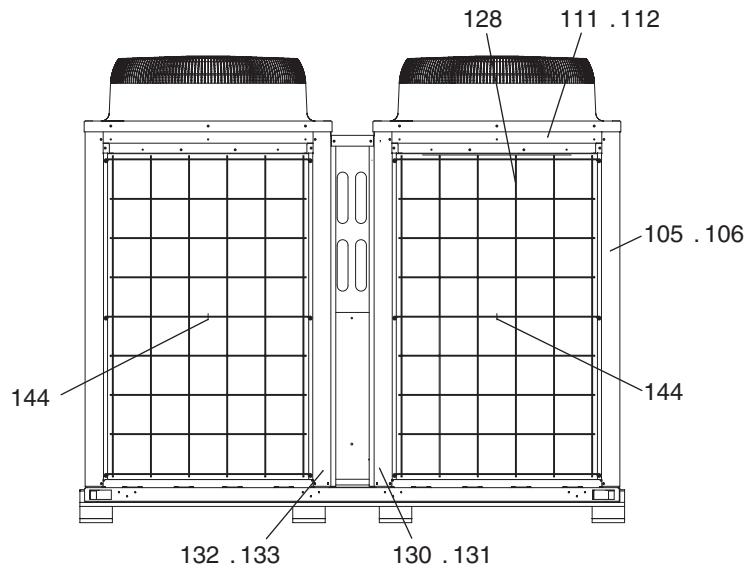
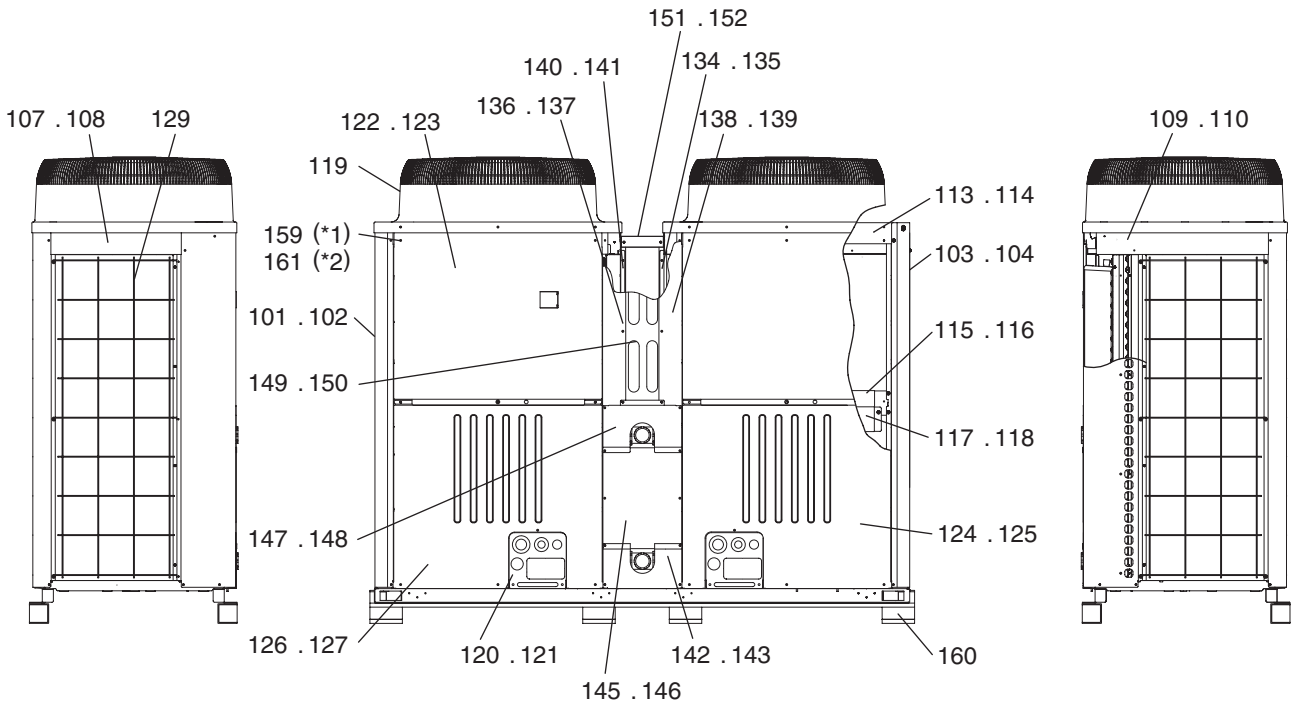
INDEX
CAHV-P500YB-HPB CAHV-P500YB-HPB-BS

Part information update day : **2020/03/16**

Please change the old catalog (issued Feb. 2015, No.BWE015030) to this new catalog.

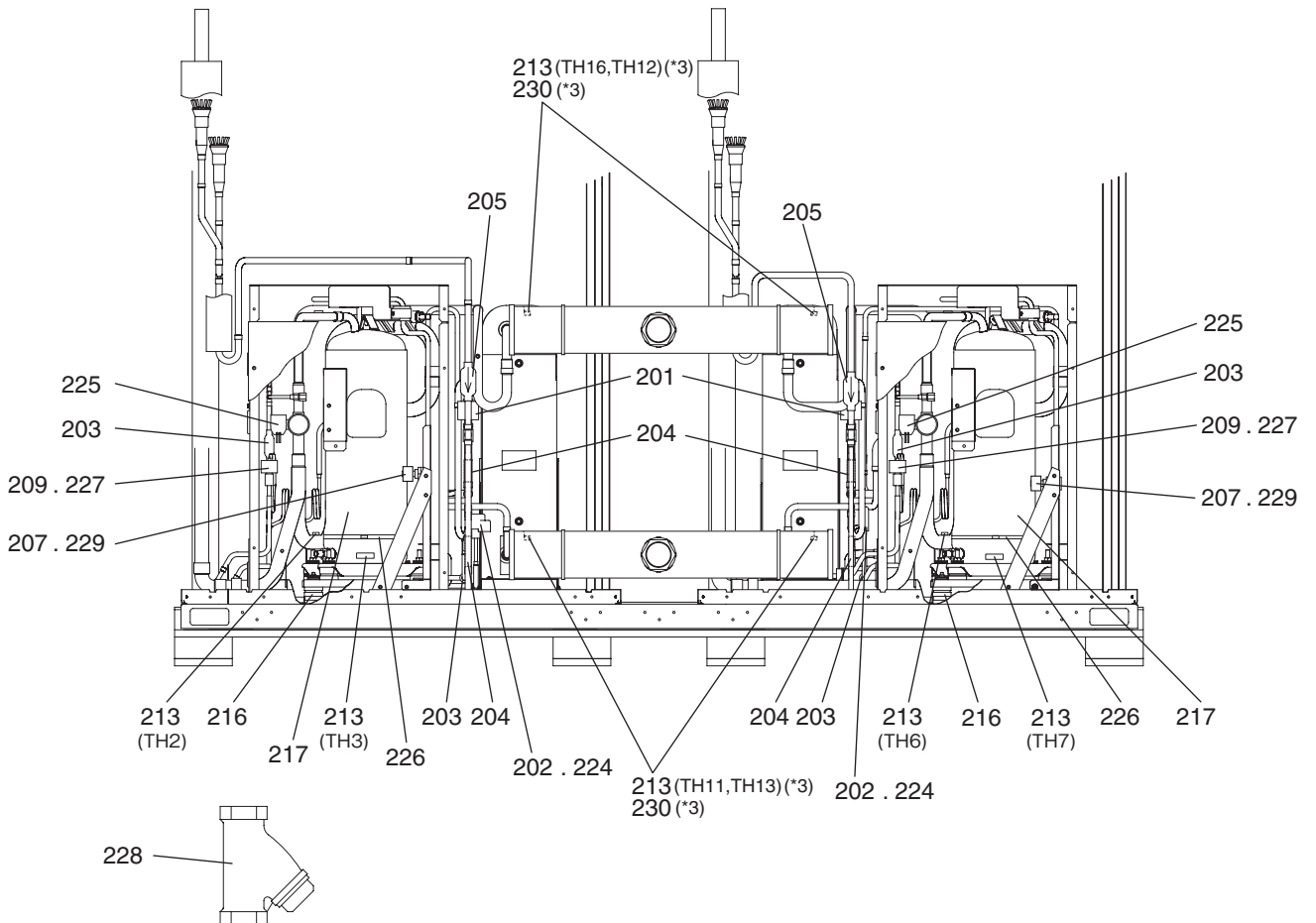
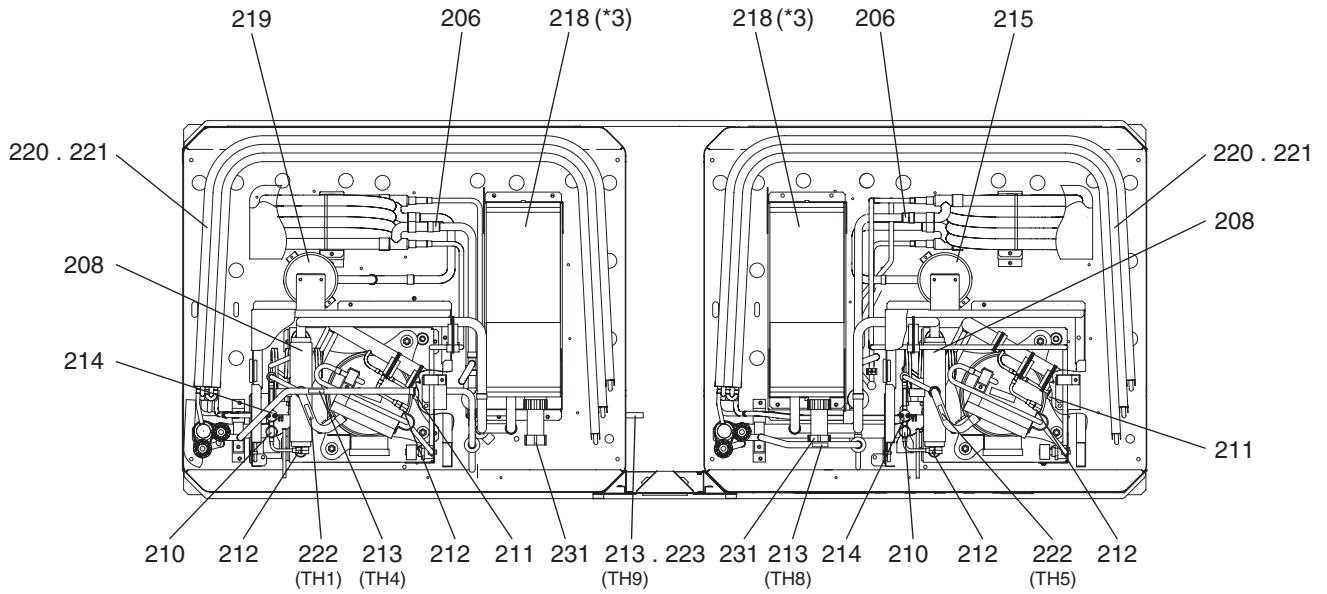
Content of revision : Some of parts are changed.





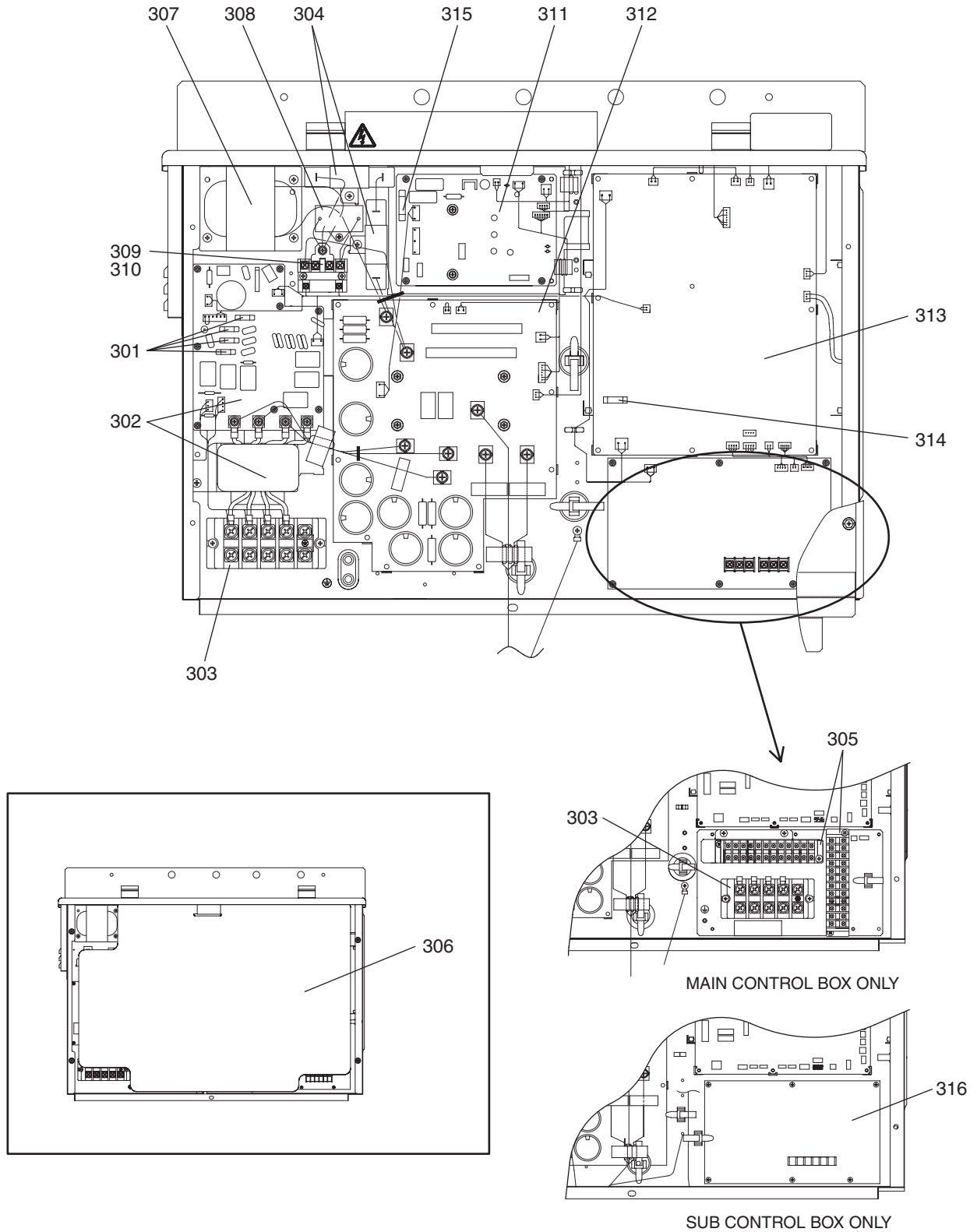
*1: Each unit requires 126 H screws (Part No. 159).
*2: Each unit requires 36 WFT screws (Part No. 161).

No.	Part No.	Part Name	Spec.	CAHV-P500YB-HPB	CAHV-P500YB-HPB-BS					Dwg. No.	Notes for the models	Revision info.
101	R11 019 626	Pillar LF		1						KB02A011G07		
102	R11 020 626	Pillar LF	BS	1						KB02A011G08		
103	R11 014 626	Pillar RF		1						KB02A012G07		
104	R11 015 626	Pillar RF	BS	1						KB02A012G08		
105	R63 002 627	Pillar B		2						KB02A013G07		
106	R63 003 627	Pillar B	BS	2						KB02A013G08		
107	R63 038 162	Frame assy L		2						KD00G100G01		
108	R63 040 162	Frame assy L	BS	2						KD00G100G02		
109	R63 039 162	Frame assy R		2						KD00G101G01		
110	R63 041 162	Frame assy R	BS	2						KD00G101G02		
111	R63 001 216	Frame assy B		2						KB00C162G10		
112	R63 002 216	Frame assy B	BS	2						KB00C162G11		
113	R63 004 668	Frame F		2						KB02J208H01		
114	R12 036 215	Frame FB	BS	2						KB02J208G03		
115	R63 013 111	Frame assy MU		2						KB00C887G01		
116	R63 014 162	Frame assy MU	BS	2						KB00C887G07		
117	R12 024 215	Frame assy MB		2						KC00G639G01		
118	R12 026 215	Frame assy MB	BS	2						KC00G639G03		
119	R63 4H6 118	Fan guard		2	2					KB25A008G03		Chg.
120	R61 095 690	Cover piping	R2	2						KB02L001G07		
121	R61 094 690	Cover piping	R2 BS	2						KB02L001G08		
122	R12 007 669	Panel assy FU		2						KN00G568G07		
123	R12 040 661	Panel assy FU	BS	2						KN00G568G08		
124	R61 003 652	Panel assy FB		1						KB02B392H04		
125	R61 004 652	Panel assy FB	BS	1						KB02B392G06		
126	R61 157 651	Panel assy FBL		1						KB02J308H02		
127	R61 162 651	Panel assy FBL	BS	1						KB02J308G03		
128	R63 004 611	Fin guard B		2	2					KB07T208G01		
129	R61 007 611	Fin guard LR		2	2					KB07C043G03		
130	R12 001 626	Pillar B(R)		1						KC02B363G05		
131	R12 013 626	Pillar B(R)	BS	1						KC02B363G06		
132	R12 002 626	Pillar B(L)		1						KC02B363G07		
133	R12 012 626	Pillar B(L)	BS	1						KC02B363G08		
134	R12 003 626	Pillar RF		1						KC02B338G09		
135	R12 007 626	Pillar RF	BS	1						KC02B338G10		
136	R12 004 626	Pillar F(L)		1						KC02B337G13		
137	R12 008 626	Pillar F(L)	BS	1						KC02B337G14		
138	R12 005 626	Pillar F(R)		1						KC02B337G15		
139	R12 009 626	Pillar F(R)	BS	1						KC02B337G16		
140	R12 014 626	Pillar assy LF		1						KC00H676G01		
141	R12 015 626	Pillar assy LF	BS	1						KC00H676G02		
142	R12 075 661	Panel B		1						KC02L798G01		
143	R12 076 661	Panel B	BS	1						KC02L798G02		
144	R63 L59 060	Guard fixed plate		2	2					W893727G01		Chg.
145	R12 009 669	Panel M		1						KC02G150G07		Chg.



*3: When part 213 (TH11 through TH13, and TH16) or part 218 is replaced, replace part 230 as well.

No.	Part No.	Part Name	Spec.	CAHV-P500YB-HPB	CAHV-P500YB-HPB-BS					Dwg. No.	Notes for the models	Revision info.
201	R12 007 920	Linear expansion valve	EFM-A0YGMD-14	2	2					KC78H427G06		Chg.
202	R63 S84 401	Expansion valve	CAM-B50	2	2					P632418X01		
203	R63 0H4 454	Strainer	UL R410A	4	4					W882823G02		
204	R63 984 904	Check valve	BCV-804DY	4	4					P639163X01		
205	R63 960 907	Strainer		2	2					W882826G01		
206	R63 Y03 454	Strainer		2	2					W893281G01		
207	R11 021 921	Solenoid valve	SEV-502DYFQ69	2	2					P631301X01		Chg.
208	R63 Y05 154	Four way valve	STF-07	2	2					P633119X01		
209	R63 001 921	Solenoid valve	VPV	2	2					P631295X01		
210	R12 006 936	Pressure sensor	HP D272	2	2					P418100X01		
211	R12 007 936	Pressure sensor	LP D272	2	2					P418099X01		
212	R12 005 904	Check joint		4	4					P666009X01		
213	R63 670 202	Thermistor	MDW103H	11	11					P425496X01	*3 <TH2-4,TH6-8,TH11-13,TH16>	
214	R12 013 965	Pressure switch assy		2	2					KC78F672G06		Chg.
215	R12 007 477	Receiver assy	(BS)	1	1					KC00B385G09		Chg.
216	R63 G95 104	Rubber mount		16	16					W836228H01		
217	R69 202 478	Compressor	HEK84FC1-Y	2	2					EP10124B02		Chg.
218	R12 018 103	Water side HEX. assy		2	2					KW00C344G01	*3	Chg.
219	R12 008 477	Receiver assy	(BS)	1	1					KC00B385G11		Chg.
220	R12 019 105	Heat exchanger	3LS (EU)	2						KC01G160G22		Chg.
221	R12 036 105	Heat exchanger	3L BS		2					KC01G160G21		Chg.
222	R63 911 202	Thermistor		2	2					P425416X02	<TH1,TH5>	
223	R61 001 310	Sensor holder		1	1					KB25B471G02		Chg.
224	R63 011 401	Solenoid coil	CAM L1800 WHITE	2	2					P472059X02		
225	R63 Y16 243	Solenoid coil	STF DV	2	2					P472024X01		
226	R63 Y07 237	Belt heater		2	2					P493781X02		
227	R61 006 243	Solenoid coil	VPV Y	2	2					P472046X01		
228	R12 007 907	Strainer	1-1/2B	1	1					P641138X01		
229	R61 073 243	Solenoid coil	SEV 240V50	2	2					P472015X01		Chg.
230	R12 002 014	Insulator		4	4					KC33F724H01	*3	
231	R12 003 576	O-ring	NJPK 25Su	4	4					KC00U937G01		Add.



No.	Part No.	Part Name	Spec.	CAHV-P500YB-HPB	CAHV-P500YB-HPB-BS						Dwg. No.	Notes for the models	Revision info.
301	R61 021 239	Fuse	6.3A AC250V T	4	4						S423001H30		Chg.
302	R61 015 293	Noise filter	30PYTST4C7-1	2	2						KE80C155G05		
303	R61 007 246	Terminal block	HP-T3011A105PL2S	3	3						S436005H12		
304	R61 001 234	Resistor	MFS40A220KI	4	4						P411151X01		
305	R63 365 782	Terminal block	12P	2	2						P436134X01		
306	R12 017 310	Sheet		2	2						KE73C397G02		
307	R61 012 259	Reactor	38A 1.92MH	2	2						P715441X02		
308	R61 001 255	Capacitor assy		2	2						KE00D263G01		
309	R61 003 216	Relay	AHE2231-K1	2	2						P421295X01		
310	R61 018 246	Short terminal relay		2	2						KE03D215H02		
311	R61 037 280	PCA board assy	INVS06Y	2	2						W652171G07		
312	R12 027 937	PCA board assy	INV20Y	2	2						KE80C154G18		
313	R12 029 937	PCA board assy	CH10	2	2						KE80C940G02		
314	R61 005 239	Fuse	HT 3.15A N5	2	2						S423001H39		
315	R61 016 239	Fuse	SHV14 10A	2	2						S423001H36		
316	R61 012 281	M-NET board		1	1						KE80C055G03		

mitsubishi
electric
corporation

BWE01503A (20200331)